

Product datasheet for **TA337945**

FCP1 (CTDP1) Rabbit Polyclonal Antibody

Product data:

Product Type:	Primary Antibodies
Applications:	WB
Recommended Dilution:	WB
Reactivity:	Human
Host:	Rabbit
Isotype:	IgG
Clonality:	Polyclonal
Immunogen:	The immunogen for anti-CTDP1 antibody is: synthetic peptide directed towards the C-terminal region of Human CTDP1. Synthetic peptide located within the following region: AHAPDKEPELGGQEEGERDGLCGLGNGCADRKEAETESQNSELSGVTAGE
Formulation:	Liquid. Purified antibody supplied in 1x PBS buffer with 0.09% (w/v) sodium azide and 2% sucrose. <i>Note that this product is shipped as lyophilized powder to China customers.</i>
Purification:	Affinity Purified
Conjugation:	Unconjugated
Storage:	Store at -20°C as received.
Stability:	Stable for 12 months from date of receipt.
Predicted Protein Size:	93 kDa
Gene Name:	CTD phosphatase subunit 1
Database Link:	NP_430255 Entrez Gene 9150 Human Q9Y5B0
Background:	This gene encodes a protein which interacts with the carboxy-terminus of the RAP74 subunit of transcription initiation factor TFIIF, and functions as a phosphatase that processively dephosphorylates the C-terminus of POLR2A (a subunit of RNA polymerase II), making it available for initiation of gene expression. Mutations in this gene are associated with congenital cataracts, facial dysmorphism and neuropathy syndrome (CCFDN). Alternatively spliced transcript variants encoding different isoforms have been described for this gene.



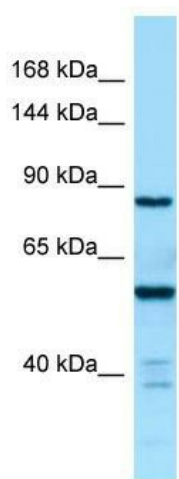
[View online »](#)

Synonyms: CCFDN; FCP1

Note: Immunogen Sequence Homology: Dog: 100%; Pig: 100%; Rat: 100%; Horse: 100%; Human: 100%; Mouse: 100%; Rabbit: 100%; Guinea pig: 92%; Zebrafish: 85%

Protein Families: Druggable Genome, Phosphatase, Transcription Factors

Product images:



WB Suggested Anti-CTDP1 Antibody; Titration: 1.0 ug/ml; Positive Control: Fetal kidney