

Product datasheet for **TA337943**

EMILIN3 Rabbit Polyclonal Antibody

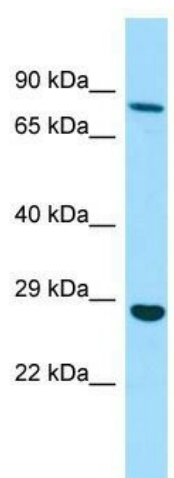
Product data:

Product Type:	Primary Antibodies
Applications:	WB
Recommended Dilution:	WB
Reactivity:	Human
Host:	Rabbit
Isotype:	IgG
Clonality:	Polyclonal
Immunogen:	The immunogen for anti-EMILIN3 antibody is: synthetic peptide directed towards the C-terminal region of Human EMILIN3. Synthetic peptide located within the following region: QYSDAFLAANTSLDERERKVEAEVQAIQEQVSSQGSRLQAGHRQVLNLRG
Formulation:	Liquid. Purified antibody supplied in 1x PBS buffer with 0.09% (w/v) sodium azide and 2% sucrose. <i>Note that this product is shipped as lyophilized powder to China customers.</i>
Purification:	Affinity Purified
Conjugation:	Unconjugated
Storage:	Store at -20°C as received.
Stability:	Stable for 12 months from date of receipt.
Predicted Protein Size:	80 kDa
Gene Name:	elastin microfibril interfacier 3
Database Link:	NP_443078 Entrez Gene 90187 Human Q9NT22
Background:	The function of this protein remains unknown.
Synonyms:	C20orf130; dj620E11.4; EMILIN5
Note:	Immunogen Sequence Homology: Pig: 100%; Rat: 100%; Horse: 100%; Human: 100%; Bovine: 100%; Rabbit: 100%; Guinea pig: 100%; Dog: 93%; Mouse: 93%
Protein Families:	Secreted Protein



[View online »](#)

Product images:



WB Suggested Anti-EMILIN3 Antibody; Titration:
1.0 ug/ml; Positive Control: HepG2 Whole Cell