

Product datasheet for **TA337941**

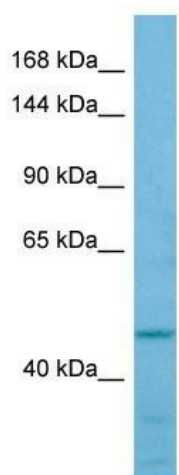
FMNL2 Rabbit Polyclonal Antibody

Product data:

Product Type:	Primary Antibodies
Applications:	WB
Recommended Dilution:	WB
Reactivity:	Human
Host:	Rabbit
Isotype:	IgG
Clonality:	Polyclonal
Immunogen:	The immunogen for anti-FMNL2 antibody is: synthetic peptide directed towards the middle region of Human FMNL2. Synthetic peptide located within the following region: RFVKAYKQAEENELRKKQEALMEKLLLEQEALMEQQDPKSPSHKSKRQQ
Formulation:	Liquid. Purified antibody supplied in 1x PBS buffer with 0.09% (w/v) sodium azide and 2% sucrose. <i>Note that this product is shipped as lyophilized powder to China customers.</i>
Purification:	Affinity Purified
Conjugation:	Unconjugated
Storage:	Store at -20°C as received.
Stability:	Stable for 12 months from date of receipt.
Predicted Protein Size:	50 kDa
Gene Name:	formin like 2
Database Link:	NP_443137 Entrez Gene 114793 Human Q96PY5
Background:	The function of this protein remains unknown.
Synonyms:	FHOD2
Note:	Immunogen Sequence Homology: Dog: 100%; Pig: 100%; Rat: 100%; Horse: 100%; Human: 100%; Mouse: 100%; Bovine: 100%; Rabbit: 100%; Guinea pig: 100%; Zebrafish: 79%
Protein Families:	Transcription Factors



[View online »](#)

Product images:

Host: Rabbit; Target Name: FMNL2; Sample
Tissue: OVCAR-3 Whole Cell lysates; Antibody
Dilution: 1.0 ug/ml