

## Product datasheet for **TA337940**

### IL22 RA2 (IL22RA2) Rabbit Polyclonal Antibody

#### Product data:

Product Type:	Primary Antibodies
Applications:	WB
Recommended Dilution:	WB
Reactivity:	Human
Host:	Rabbit
Isotype:	IgG
Clonality:	Polyclonal
Immunogen:	The immunogen for anti-IL22RA2 antibody is: synthetic peptide directed towards the C-terminal region of Human IL22RA2. Synthetic peptide located within the following region: NITQVNGSLLVILHAPNLPYRYQKEKNVSIEDYYELLYRVFIINNSLEKE
Formulation:	Liquid. Purified antibody supplied in 1x PBS buffer with 0.09% (w/v) sodium azide and 2% sucrose. <i>Note that this product is shipped as lyophilized powder to China customers.</i>
Purification:	Affinity Purified
Conjugation:	Unconjugated
Storage:	Store at -20°C as received.
Stability:	Stable for 12 months from date of receipt.
Predicted Protein Size:	26 kDa
Gene Name:	interleukin 22 receptor subunit alpha 2
Database Link:	<a href="#">NP_443194</a> <a href="#">Entrez Gene 116379 Human</a> <a href="#">Q969J5</a>
Background:	The protein encoded by this gene is a soluble class II cytokine receptor. This protein has been shown to specifically bind to interleukin 22 (IL22), block the interaction of IL22 with its cell surface receptor, and thus inhibit IL22 activity. This protein functions as an IL22 antagonist, and may be important in the regulation of inflammatory response. Three alternatively spliced transcript variants encoding distinct isoforms have been described.
Synonyms:	CRF2-10; CRF2-S1; CRF2X; IL-22BP; IL-22R-alpha-2; IL-22RA2; ZCYTOR16



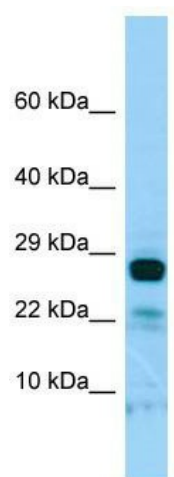
[View online »](#)

**Note:** Immunogen Sequence Homology: Human: 100%; Dog: 86%

**Protein Families:** Druggable Genome, Secreted Protein

**Protein Pathways:** Cytokine-cytokine receptor interaction, Jak-STAT signaling pathway

**Product images:**



WB Suggested Anti-IL22RA2 Antibody; Titration:  
1.0 ug/ml; Positive Control: RPMI-8226 Whole Cell