

## Product datasheet for **TA337936**

### COLQ Rabbit Polyclonal Antibody

#### Product data:

Product Type:	Primary Antibodies
Applications:	WB
Recommended Dilution:	WB
Reactivity:	Human
Host:	Rabbit
Isotype:	IgG
Clonality:	Polyclonal
Immunogen:	The immunogen for anti-COLQ antibody: synthetic peptide directed towards the C terminal of human COLQ. Synthetic peptide located within the following region: GKPGPSGQPGRPGPPGPPPAGHMETCNAPSTATSTPRPAATSPEGREEKV
Formulation:	Liquid. Purified antibody supplied in 1x PBS buffer with 0.09% (w/v) sodium azide and 2% sucrose.
Purification:	Affinity Purified
Conjugation:	Unconjugated
Storage:	Store at -20°C as received.
Stability:	Stable for 12 months from date of receipt.
Predicted Protein Size:	31 kDa
Gene Name:	collagen-like tail subunit (single strand of homotrimer) of asymmetric acetylcholinesterase
Database Link:	<a href="#">NP_536805</a> <a href="#">Entrez Gene 8292 Human</a> <a href="#">Q9Y215</a>
Background:	COLQ encodes the subunit of a collagen-like molecule associated with acetylcholinesterase in skeletal muscle. Each molecule is composed of three identical subunits. Each subunit contains a proline-rich attachment domain (PRAD) that binds an acetylcholinesterase tetramer to anchor the catalytic subunit of the enzyme to the basal lamina. Mutations in COLQ are associated with endplate acetylcholinesterase deficiency.



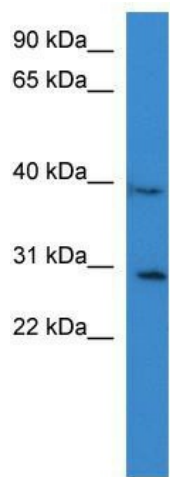
[View online »](#)

**Synonyms:** acetylcholinesterase-associated collagen; acetylcholinesterase collagen-like tail subunit; AChE Q subunit; collagenic tail of endplate acetylcholinesterase; EAD; single strand of homotrimeric collagen-like tail subunit of asymmetric acetylcholinesterase

**Note:** Immunogen Sequence Homology: Human: 100%

**Protein Families:** Druggable Genome, Transmembrane

**Product images:**



WB Suggested Anti-COLQ Antibody Titration: 0.2-1 ug/ml; ELISA Titer: 1:312500; Positive Control: PANC1 cell lysate COLQ is supported by BioGPS gene expression data to be expressed in PANC1