

Product datasheet for **TA337935**

RNF36 (TRIM69) Rabbit Polyclonal Antibody

Product data:

| | |
|--------------------------------|--|
| Product Type: | Primary Antibodies |
| Applications: | WB |
| Recommended Dilution: | WB |
| Reactivity: | Human |
| Host: | Rabbit |
| Isotype: | IgG |
| Clonality: | Polyclonal |
| Immunogen: | The immunogen for anti-RNF36 antibody: synthetic peptide directed towards the N terminal of human RNF36. Synthetic peptide located within the following region: SIQAKTEQQNSFDLKDITLLHSLEQGMKVLATRELISRKLNGLGQYKGP |
| Formulation: | Liquid. Purified antibody supplied in 1x PBS buffer with 0.09% (w/v) sodium azide and 2% sucrose. <i>Note that this product is shipped as lyophilized powder to China customers.</i> |
| Purification: | Affinity Purified |
| Conjugation: | Unconjugated |
| Storage: | Store at -20°C as received. |
| Stability: | Stable for 12 months from date of receipt. |
| Predicted Protein Size: | 41 kDa |
| Gene Name: | tripartite motif containing 69 |
| Database Link: | NP_542783 Entrez Gene 140691 Human Q86WT6 |
| Background: | RNF36 is specifically expressed in germ cells at round spermatid stages during spermatogenesis. The protein encoded by this gene contains an N-terminal RING finger motif, a B-box, and a C-terminal B-30.2-like domain. When overexpressed in COS-7 and HEK-293 cells, this protein was shown to induce cell apoptosis. |
| Synonyms: | HSD-34; HSD34; RNF36; Trif |

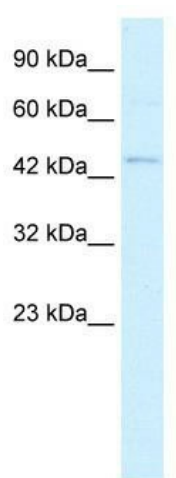


[View online »](#)

Note: Immunogen Sequence Homology: Human: 100%; Pig: 86%; Rat: 85%; Mouse: 85%; Horse: 79%; Bovine: 79%; Rabbit: 79%

Protein Families: Druggable Genome

Product images:



WB Suggested Anti-RNF36 Antibody Titration: 0.2-1 ug/ml; ELISA Titer: 1:12500; Positive Control: Jurkat cell lysate