

Product datasheet for **TA337934**

RNF36 (TRIM69) Rabbit Polyclonal Antibody

Product data:

Product Type:	Primary Antibodies
Applications:	WB
Recommended Dilution:	WB
Reactivity:	Human
Host:	Rabbit
Isotype:	IgG
Clonality:	Polyclonal
Immunogen:	The immunogen for anti-TRIM69 antibody: synthetic peptide directed towards the N terminal of human TRIM69. Synthetic peptide located within the following region: NKLHLQQHVSMEFLKLHQFLHSKEKDILTELREEGKALNEEMELNLSQLQ
Formulation:	Liquid. Purified antibody supplied in 1x PBS buffer with 0.09% (w/v) sodium azide and 2% sucrose. <i>Note that this product is shipped as lyophilized powder to China customers.</i>
Purification:	Affinity Purified
Conjugation:	Unconjugated
Storage:	Store at -20°C as received.
Stability:	Stable for 12 months from date of receipt.
Predicted Protein Size:	39 kDa
Gene Name:	tripartite motif containing 69
Database Link:	NP_542783 Entrez Gene 140691 Human Q86WT6



[View online »](#)

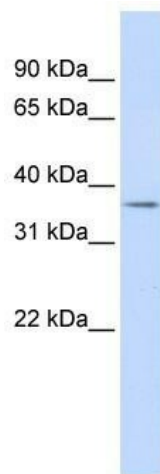
Background: TRIM69 is a member of the RING-B-box-coiled-coil (RBCC) family and encodes a protein with an N-terminal RING finger motif, a PRY domain and a C-terminal SPRY domain. The mouse ortholog of this gene is specifically expressed in germ cells at the round spermatid stages during spermatogenesis and, when overexpressed, induces apoptosis. This gene encodes a member of the RING-B-box-coiled-coil (RBCC) family and encodes a protein with an N-terminal RING finger motif, a PRY domain and a C-terminal SPRY domain. The mouse ortholog of this gene is specifically expressed in germ cells at the round spermatid stages during spermatogenesis and, when overexpressed, induces apoptosis. Alternatively spliced transcript variants encoding distinct isoforms have been described.

Synonyms: HSD-34; HSD34; RNF36; Trif

Note: Immunogen Sequence Homology: Human: 100%; Pig: 93%; Rabbit: 93%; Rat: 90%; Horse: 86%; Bovine: 86%; Dog: 79%; Mouse: 79%

Protein Families: Druggable Genome

Product images:



WB Suggested Anti-TRIM69 Antibody Titration:
0.2-1 ug/ml; ELISA Titer: 1:312500; Positive
Control: Human heart