

Product datasheet for TA337931

GPR78 Rabbit Polyclonal Antibody

Product data:

| | |
|-------------------------|---|
| Product Type: | Primary Antibodies |
| Applications: | WB |
| Recommended Dilution: | WB |
| Reactivity: | Human |
| Host: | Rabbit |
| Isotype: | IgG |
| Clonality: | Polyclonal |
| Immunogen: | The immunogen for anti-GPR78 antibody is: synthetic peptide directed towards the C-terminal region of Human GPR78. Synthetic peptide located within the following region: MVHRLKRTPRPASTHDSSLDVAGMVHQLLKRTPRPASTHNGSVDTENDS |
| Formulation: | Liquid. Purified antibody supplied in 1x PBS buffer with 0.09% (w/v) sodium azide and 2% sucrose. <i>Note that this product is shipped as lyophilized powder to China customers.</i> |
| Purification: | Affinity Purified |
| Conjugation: | Unconjugated |
| Storage: | Store at -20°C as received. |
| Stability: | Stable for 12 months from date of receipt. |
| Predicted Protein Size: | 39 kDa |
| Gene Name: | G protein-coupled receptor 78 |
| Database Link: | NP_543009 Entrez Gene 27201 Human Q96P69 |
| Background: | The protein encoded by this gene belongs to the G protein-coupled receptor family, which contain 7 transmembrane domains and transduce extracellular signals through heterotrimeric G proteins. This is an orphan receptor, which displays significant level of constitutive activity. Association analysis shows preliminary evidence for the involvement of this gene in susceptibility to bipolar affective disorder and schizophrenia. Alternatively spliced transcript variants have been found for this gene. |



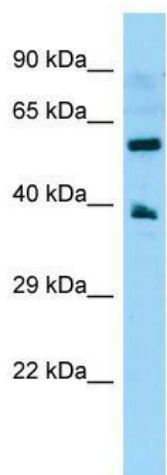
[View online »](#)

Synonyms: GPR78

Note: Immunogen Sequence Homology: Human: 100%

Protein Families: Druggable Genome, GPCR, Transmembrane

Product images:



WB Suggested Anti-GPR78 Antibody; Titration: 1.0 ug/ml; Positive Control: OVCAR-3 Whole Cell