

Product datasheet for **TA337930**

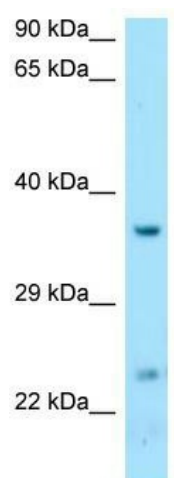
DTD1 Rabbit Polyclonal Antibody

Product data:

Product Type:	Primary Antibodies
Applications:	WB
Recommended Dilution:	WB
Reactivity:	Human
Host:	Rabbit
Isotype:	IgG
Clonality:	Polyclonal
Immunogen:	The immunogen for anti-DTD1 antibody is: synthetic peptide directed towards the C-terminal region of Human DTD1. Synthetic peptide located within the following region: NDGPVTIELESPAPGTATSDPKQLSKLEKQQQRKEKTRAKGPSESSKERN
Formulation:	Liquid. Purified antibody supplied in 1x PBS buffer with 0.09% (w/v) sodium azide and 2% sucrose. <i>Note that this product is shipped as lyophilized powder to China customers.</i>
Purification:	Affinity Purified
Conjugation:	Unconjugated
Storage:	Store at -20°C as received.
Stability:	Stable for 12 months from date of receipt.
Predicted Protein Size:	23 kDa
Gene Name:	D-tyrosyl-tRNA deacylase 1
Database Link:	NP_543010 Entrez Gene 92675 Human Q8TEA8
Background:	The protein encoded by this gene is similar in sequence to histidyl-tRNA synthetase, which hydrolyzes D-tyrosyl-tRNA(Tyr) into D-tyrosine and free tRNA(Tyr). The encoded protein is found in the cytoplasm.
Synonyms:	C20orf88; DUE-B; DUEB; HARS2; pqn-68
Note:	Immunogen Sequence Homology: Dog: 100%; Pig: 100%; Rat: 100%; Horse: 100%; Human: 100%; Mouse: 100%; Bovine: 100%; Rabbit: 100%; Guinea pig: 93%; Zebrafish: 86%



[View online »](#)

Product images:

WB Suggested Anti-DTD1 Antibody; Titration: 1.0 ug/ml; Positive Control: Fetal Liver