

## Product datasheet for **TA337919**

### G6PC3 Rabbit Polyclonal Antibody

#### Product data:

Product Type:	Primary Antibodies
Applications:	WB
Recommended Dilution:	WB
Reactivity:	Human
Host:	Rabbit
Isotype:	IgG
Clonality:	Polyclonal
Immunogen:	The immunogen for anti-G6PC3 antibody is: synthetic peptide directed towards the N-terminal region of Human G6PC3. Synthetic peptide located within the following region: ESGYYSQAPAQVHQFPSSCETGPGSPSGHCMITGAALWPIMTALSSQVAT
Formulation:	Liquid. Purified antibody supplied in 1x PBS buffer with 0.09% (w/v) sodium azide and 2% sucrose. <i>Note that this product is shipped as lyophilized powder to China customers.</i>
Purification:	Affinity Purified
Conjugation:	Unconjugated
Storage:	Store at -20°C as received.
Stability:	Stable for 12 months from date of receipt.
Predicted Protein Size:	39 kDa
Gene Name:	glucose-6-phosphatase catalytic subunit 3
Database Link:	<a href="#">NP_612396</a> <a href="#">Entrez Gene 92579 Human</a> <a href="#">Q9BUM1</a>
Background:	This gene encodes the catalytic subunit of glucose-6-phosphatase (G6Pase). G6Pase is located in the endoplasmic reticulum (ER) and catalyzes the hydrolysis of glucose-6-phosphate to glucose and phosphate in the last step of the gluconeogenic and glycogenolytic pathways. Mutations in this gene result in autosomal recessive severe congenital neutropenia. Multiple transcript variants have been found for this gene, only one of which is expected to express a protein.



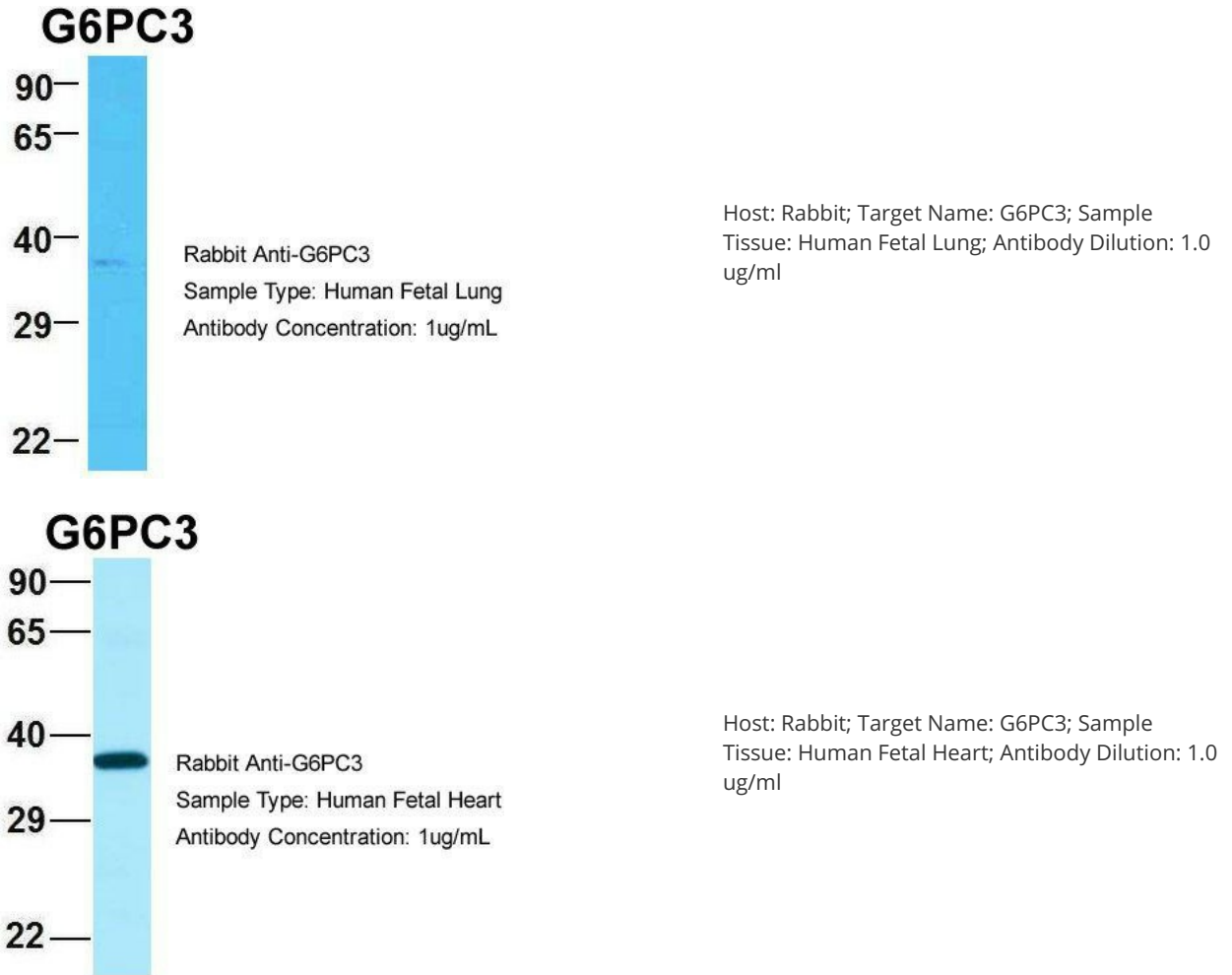
[View online »](#)

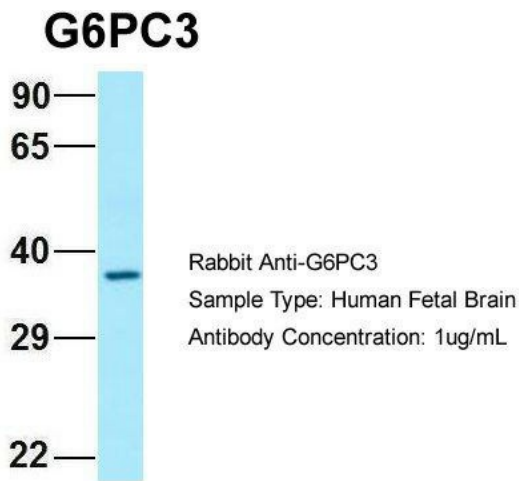
**Synonyms:** SCN4; UGRP

**Note:** Immunogen Sequence Homology: Dog: 100%; Pig: 100%; Rat: 100%; Horse: 100%; Human: 100%; Mouse: 100%; Bovine: 100%; Rabbit: 100%; Guinea pig: 100%; Zebrafish: 86%; Sheep: 85%

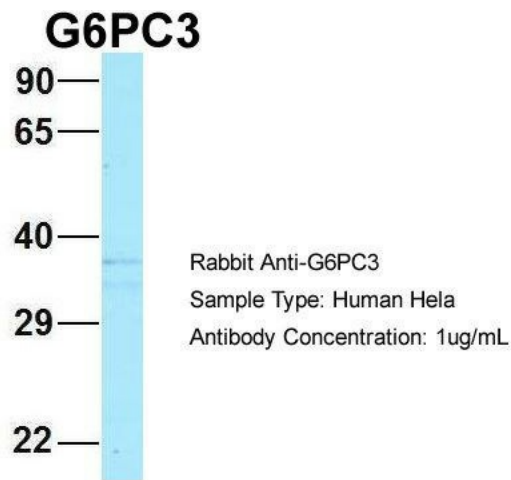
**Protein Families:** Druggable Genome, Transmembrane

**Product images:**

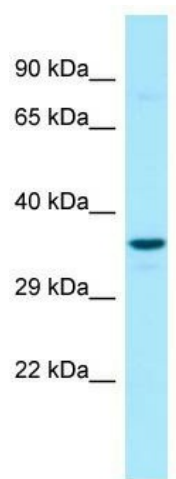




Host: Rabbit; Target Name: G6PC3; Sample Tissue: Human Fetal Brain; Antibody Dilution: 1.0 ug/ml



Host: Rabbit; Target Name: G6PC3; Sample Tissue: HeLa; Antibody Dilution: 1.0 ug/ml G6PC3 is strongly supported by BioGPS gene expression data to be expressed in HeLa



WB Suggested Anti-G6PC3 Antibody; Titration: 1.0 ug/ml; Positive Control: 721\_B Whole Cell G6PC3 is strongly supported by BioGPS gene expression data to be expressed in Human 721\_B cells