

Product datasheet for TA337917

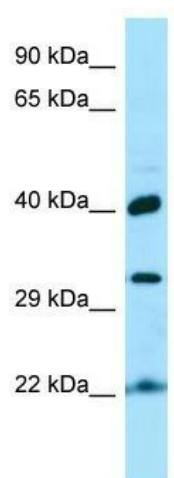
KT112 Rabbit Polyclonal Antibody

Product data:

Product Type:	Primary Antibodies
Applications:	WB
Recommended Dilution:	WB
Reactivity:	Human
Host:	Rabbit
Isotype:	IgG
Clonality:	Polyclonal
Immunogen:	The immunogen for anti-KT112 antibody is: synthetic peptide directed towards the C-terminal region of Human KT112. Synthetic peptide located within the following region: GAAESPALVTPDSEKSAKHGSGAFYSPELLEALTLRFEAPDSRNRWDRPL
Formulation:	Liquid. Purified antibody supplied in 1x PBS buffer with 0.09% (w/v) sodium azide and 2% sucrose. <i>Note that this product is shipped as lyophilized powder to China customers.</i>
Purification:	Affinity Purified
Conjugation:	Unconjugated
Storage:	Store at -20°C as received.
Stability:	Stable for 12 months from date of receipt.
Predicted Protein Size:	38 kDa
Gene Name:	KT112 chromatin associated homolog
Database Link:	NP_612426 Entrez Gene 112970 Human Q96EK9
Background:	The function of this protein remains unknown.
Synonyms:	SBBI81; TOT4
Note:	Immunogen Sequence Homology: Human: 100%; Rat: 79%
Protein Families:	Druggable Genome



[View online »](#)

Product images:

WB Suggested Anti-KT112 Antibody; Titration: 1.0 ug/ml; Positive Control: Fetal kidney