

## Product datasheet for **TA337916**

### SDSL Rabbit Polyclonal Antibody

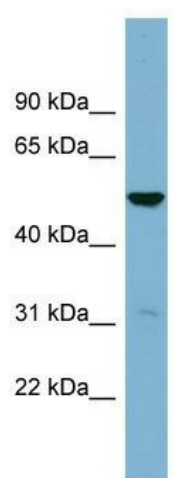
#### Product data:

Product Type:	Primary Antibodies
Applications:	WB
Recommended Dilution:	WB
Reactivity:	Human
Host:	Rabbit
Isotype:	IgG
Clonality:	Polyclonal
Immunogen:	The immunogen for anti-SDSL antibody: synthetic peptide directed towards the middle region of human SDSL. Synthetic peptide located within the following region: ALAAIYSGLLRRLQAEGCLPPSLTSVVIVCGGNNINSRELQALKTHLGQ
Formulation:	Liquid. Purified antibody supplied in 1x PBS buffer with 0.09% (w/v) sodium azide and 2% sucrose.
Purification:	Affinity Purified
Conjugation:	Unconjugated
Storage:	Store at -20°C as received.
Stability:	Stable for 12 months from date of receipt.
Predicted Protein Size:	35 kDa
Gene Name:	serine dehydratase like
Database Link:	<a href="#">NP_612441</a> <a href="#">Entrez Gene 113675 Human</a> <a href="#">Q96GA7</a>
Background:	Has low serine dehydratase and threonine dehydratase activity.
Synonyms:	cSDH; SDH 2; SDS-RS1; TDH
Note:	Immunogen Sequence Homology: Human: 100%; Rabbit: 86%; Horse: 79%



[View online »](#)

## Product images:



WB Suggested Anti-SDSL Antibody Titration: 0.2-1 ug/ml; Positive Control: NCI-H226 cell lysate