

Product datasheet for **TA337912**

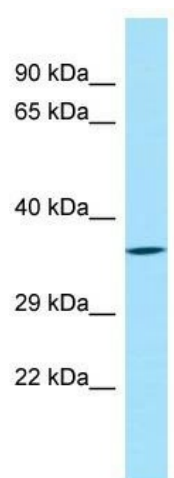
SYT8 Rabbit Polyclonal Antibody

Product data:

Product Type:	Primary Antibodies
Applications:	WB
Recommended Dilution:	WB
Reactivity:	Human
Host:	Rabbit
Isotype:	IgG
Clonality:	Polyclonal
Immunogen:	The immunogen for anti-SYT8 antibody is: synthetic peptide directed towards the C-terminal region of Human SYT8. Synthetic peptide located within the following region: LVSCLLCAACCCRRHRKKPRDKESVGLGSARGTTTTHLVQPDVDGLESS
Formulation:	Liquid. Purified antibody supplied in 1x PBS buffer with 0.09% (w/v) sodium azide and 2% sucrose.
Purification:	Affinity Purified
Conjugation:	Unconjugated
Storage:	Store at -20°C as received.
Stability:	Stable for 12 months from date of receipt.
Predicted Protein Size:	34 kDa
Gene Name:	synaptotagmin 8
Database Link:	NP_612634 Entrez Gene 90019 Human Q8NBV8
Background:	The function of this protein remains unknown.
Synonyms:	DKFZp434K0322
Note:	Immunogen Sequence Homology: Human: 100%; Pig: 93%; Dog: 85%; Rat: 79%; Mouse: 79%; Bovine: 79%
Protein Families:	Transmembrane



[View online »](#)

Product images:

Host: Rabbit; Target Name: SYT8; Sample Tissue: MDA-MB-435S Whole Cell lysates; Antibody Dilution: 1.0 ug/ml