

Product datasheet for **TA337910**

TAS1R1 Rabbit Polyclonal Antibody

Product data:

| | |
|-------------------------|--|
| Product Type: | Primary Antibodies |
| Applications: | WB |
| Recommended Dilution: | WB |
| Reactivity: | Human |
| Host: | Rabbit |
| Isotype: | IgG |
| Clonality: | Polyclonal |
| Immunogen: | The immunogen for anti-TAS1R1 antibody is: synthetic peptide directed towards the middle region of Human TAS1R1. Synthetic peptide located within the following region: QKRAVPGLKAFFEEAYARADKKAPRPCHKGSWCSSNQLCRECQAFMAHTMP |
| Formulation: | Liquid. Purified antibody supplied in 1x PBS buffer with 0.09% (w/v) sodium azide and 2% sucrose. <i>Note that this product is shipped as lyophilized powder to China customers.</i> |
| Purification: | Affinity Purified |
| Conjugation: | Unconjugated |
| Storage: | Store at -20°C as received. |
| Stability: | Stable for 12 months from date of receipt. |
| Predicted Protein Size: | 90 kDa |
| Gene Name: | taste 1 receptor member 1 |
| Database Link: | NP_619642 Entrez Gene 80835 Human Q7RTX1 |
| Background: | The protein encoded by this gene is a G protein-coupled receptor and is a component of the heterodimeric amino acid taste receptor T1R1+3. The T1R1+3 receptor responds to L-amino acids but not to D-enantiomers or other compounds. Most amino acids that are perceived as sweet activate T1R1+3, and this activation is strictly dependent on an intact T1R1+3 heterodimer. Multiple transcript variants encoding different isoforms have been found for this gene. |



[View online »](#)

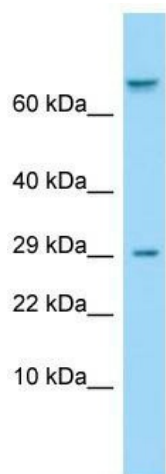
Synonyms: GM148; GPR70; T1R1; TR1

Note: Immunogen Sequence Homology: Human: 100%; Pig: 79%; Guinea pig: 79%

Protein Families: Druggable Genome, Transmembrane

Protein Pathways: Taste transduction

Product images:



Host: Rabbit; Target Name: TAS1R1; Sample
Tissue: ACHN Whole Cell lysates; Antibody
Dilution: 1.0 ug/ml