

Product datasheet for **TA337907**

ULBP4 (RAET1E) Rabbit Polyclonal Antibody

Product data:

Product Type:	Primary Antibodies
Applications:	WB
Recommended Dilution:	WB
Reactivity:	Human
Host:	Rabbit
Isotype:	IgG
Clonality:	Polyclonal
Immunogen:	The immunogen for anti-RAET1E antibody is: synthetic peptide directed towards the C-terminal region of Human RAET1E. Synthetic peptide located within the following region: LEKYFRKLSKGDCDHWLREFLGHWEAMPEPTVSPVNASDIHWSSSSLPDR
Formulation:	Liquid. Purified antibody supplied in 1x PBS buffer with 0.09% (w/v) sodium azide and 2% sucrose. <i>Note that this product is shipped as lyophilized powder to China customers.</i>
Purification:	Affinity Purified
Conjugation:	Unconjugated
Storage:	Store at -20°C as received.
Stability:	Stable for 12 months from date of receipt.
Predicted Protein Size:	27 kDa
Gene Name:	retinoic acid early transcript 1E
Database Link:	NP_631904 Entrez Gene 135250 Human Q8TD07



[View online »](#)

Background:

This gene belongs to the RAET1 family, which consists of major histocompatibility complex (MHC) class I-related genes located in a cluster on chromosome 6q24.2-q25.3. This and RAET1G protein differ from other RAET1 proteins in that they have type I membrane-spanning sequences at their C termini rather than glycosylphosphatidylinositol anchor sequences. This protein functions as a ligand for NKG2D receptor, which is expressed on the surface of several types of immune cells, and is involved in innate and adaptive immune responses. Alternatively spliced transcript variants encoding different isoforms have been found for this gene.

Synonyms:

bA350J20.7; LETAL; N2DL-4; NKG2DL4; RAET1E2; RL-4; ULBP4

Note:

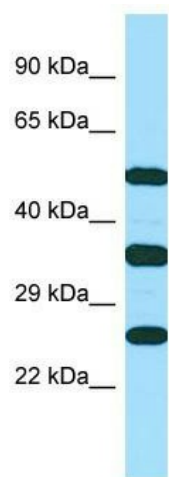
Immunogen Sequence Homology: Human: 100%

Protein Families:

Druggable Genome, Transmembrane

Protein Pathways:

Natural killer cell mediated cytotoxicity

Product images:

WB Suggested Anti-RAET1E Antibody; Titration: 1.0 ug/ml; Positive Control: MCF7 Whole Cell