

Product datasheet for **TA337906**

STARD6 Rabbit Polyclonal Antibody

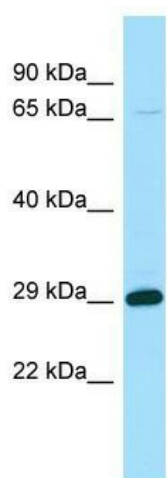
Product data:

Product Type:	Primary Antibodies
Applications:	WB
Recommended Dilution:	WB
Reactivity:	Human
Host:	Rabbit
Isotype:	IgG
Clonality:	Polyclonal
Immunogen:	The immunogen for anti-STARD6 antibody is: synthetic peptide directed towards the N-terminal region of Human STARD6. Synthetic peptide located within the following region: NRDTSGWKVVKTSKKITVSSKASRKFHGNLYRVEGIIPESPAKLSDFLYQ
Formulation:	Liquid. Purified antibody supplied in 1x PBS buffer with 0.09% (w/v) sodium azide and 2% sucrose. <i>Note that this product is shipped as lyophilized powder to China customers.</i>
Purification:	Affinity Purified
Conjugation:	Unconjugated
Storage:	Store at -20°C as received.
Stability:	Stable for 12 months from date of receipt.
Predicted Protein Size:	25 kDa
Gene Name:	StAR related lipid transfer domain containing 6
Database Link:	NP_631910 Entrez Gene 147323 Human P59095



[View online »](#)

- Background:** Cholesterol homeostasis is regulated, at least in part, by sterol regulatory element (SRE)-binding proteins and by liver X receptors. Upon sterol depletion, LXRs are inactive and SREBPs are cleaved, after which they bind promoter SREs and activate genes involved in cholesterol biosynthesis and uptake. Sterol transport is mediated by vesicles or by soluble protein carriers, such as steroidogenic acute regulatory protein. STAR is homologous to a family of proteins containing a 200- to 210-amino acid STAR-related lipid transfer (START) domain, including STARD6.
- Synonyms:** OTTHUMP00000163555; StAR-related lipid transfer (START) domain containing 6; START domain containing 6; START domain containing protein 6
- Note:** Immunogen Sequence Homology: Human: 100%; Dog: 93%; Rat: 92%; Bovine: 92%; Rabbit: 92%; Pig: 83%; Mouse: 83%

Product images:

WB Suggested Anti-STARD6 Antibody; Titration: 1.0 ug/ml; Positive Control: Fetal Kidney