

Product datasheet for **TA337904**

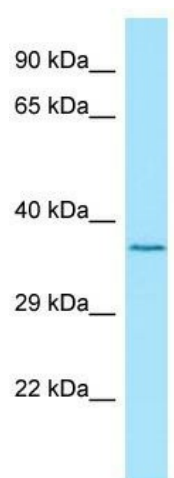
LGI4 Rabbit Polyclonal Antibody

Product data:

Product Type:	Primary Antibodies
Applications:	WB
Recommended Dilution:	WB
Reactivity:	Human
Host:	Rabbit
Isotype:	IgG
Clonality:	Polyclonal
Immunogen:	The immunogen for anti-LGI4 antibody is: synthetic peptide directed towards the C-terminal region of Human LGI4. Synthetic peptide located within the following region: GGRFERRTDIPEAEDVYATRHFQAGGDVFLCLTRYIGDSMVRLGLGAGGW
Formulation:	Liquid. Purified antibody supplied in 1x PBS buffer with 0.09% (w/v) sodium azide and 2% sucrose.
Purification:	Affinity Purified
Conjugation:	Unconjugated
Storage:	Store at -20°C as received.
Stability:	Stable for 12 months from date of receipt.
Predicted Protein Size:	32 kDa
Gene Name:	leucine-rich repeat LGI family member 4
Database Link:	NP_644813 Entrez Gene 163175 Human Q8N135
Background:	The function of this protein remains unknown.
Synonyms:	LGIL3
Note:	Immunogen Sequence Homology: Dog: 100%; Pig: 100%; Rat: 100%; Horse: 100%; Human: 100%; Mouse: 100%; Bovine: 100%; Rabbit: 100%; Guinea pig: 100%; Zebrafish: 92%



[View online »](#)

Product images:

Host: Rabbit; Target Name: LGI4; Sample Tissue: Jurkat Whole Cell lysates; Antibody Dilution: 1.0 ug/ml