

Product datasheet for **TA337903**

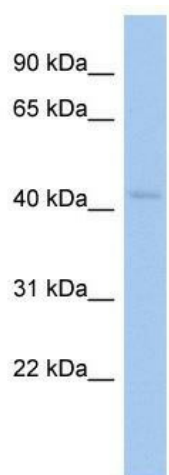
ZNF558 Rabbit Polyclonal Antibody

Product data:

Product Type:	Primary Antibodies
Applications:	WB
Recommended Dilution:	WB
Reactivity:	Human
Host:	Rabbit
Isotype:	IgG
Clonality:	Polyclonal
Immunogen:	The immunogen for anti-ZNF558 antibody: synthetic peptide directed towards the N terminal of human ZNF558. Synthetic peptide located within the following region: GILPSTCPDLETLKAKWLTPKKNVFRKEQSKGVKTERSHRGVKLNECNQ
Formulation:	Liquid. Purified antibody supplied in 1x PBS buffer with 0.09% (w/v) sodium azide and 2% sucrose. <i>Note that this product is shipped as lyophilized powder to China customers.</i>
Purification:	Affinity Purified
Conjugation:	Unconjugated
Storage:	Store at -20°C as received.
Stability:	Stable for 12 months from date of receipt.
Predicted Protein Size:	46 kDa
Gene Name:	zinc finger protein 558
Database Link:	NP_653294 Entrez Gene 148156 Human Q96NG5
Background:	ZNF588 contains 1 KRAB domain and 9 C2H2-type zinc fingers. It belongs to the krueppel C2H2-type zinc-finger protein family and may be involved in transcriptional regulation.
Synonyms:	FLJ30932
Note:	Immunogen Sequence Homology: Human: 100%; Rat: 85%
Protein Families:	Transcription Factors



[View online »](#)

Product images:

WB Suggested Anti-ZNF558 Antibody Titration:
0.2-1 ug/ml; ELISA Titer: 1:62500; Positive Control:
HT1080 cell lysate