

Product datasheet for **TA337902**

CCDC26 Rabbit Polyclonal Antibody

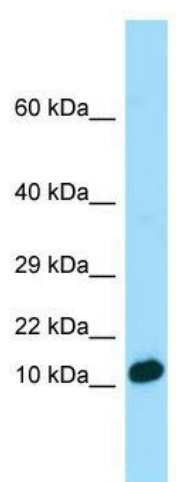
Product data:

Product Type:	Primary Antibodies
Applications:	WB
Recommended Dilution:	WB
Reactivity:	Human
Host:	Rabbit
Isotype:	IgG
Clonality:	Polyclonal
Immunogen:	The immunogen for anti-CCDC26 antibody is: synthetic peptide directed towards the C-terminal region of Human CCDC26. Synthetic peptide located within the following region: VPINKYQRLVVKMKEEEALREKLNMQNITHKENQNAGSLEMIDNMLKQEE
Formulation:	Liquid. Purified antibody supplied in 1x PBS buffer with 0.09% (w/v) sodium azide and 2% sucrose.
Purification:	Affinity Purified
Conjugation:	Unconjugated
Storage:	Store at -20°C as received.
Stability:	Stable for 12 months from date of receipt.
Predicted Protein Size:	13 kDa
Database Link:	NP_659487 Entrez Gene 137196 Human
Background:	The function of this protein remains unknown.
Synonyms:	MGC27434; RAM
Note:	Immunogen Sequence Homology: Human: 100%



[View online »](#)

Product images:



WB Suggested Anti-CCDC26 Antibody; Titration:
1.0 ug/ml; Positive Control: Fetal Liver