

## Product datasheet for **TA337901**

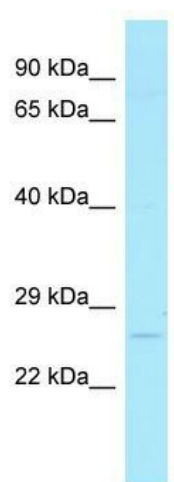
### MBD3L1 Rabbit Polyclonal Antibody

#### Product data:

Product Type:	Primary Antibodies
Applications:	WB
Recommended Dilution:	WB
Reactivity:	Human
Host:	Rabbit
Isotype:	IgG
Clonality:	Polyclonal
Immunogen:	The immunogen for anti-MBD3L1 antibody is: synthetic peptide directed towards the C-terminal region of Human MBD3L1. Synthetic peptide located within the following region: CKQFLVTEEDIRKQEGKVKTVRERLAIALIADGLANEAEKVRDQEGRPEK
Formulation:	Liquid. Purified antibody supplied in 1x PBS buffer with 0.09% (w/v) sodium azide and 2% sucrose.
Purification:	Affinity Purified
Conjugation:	Unconjugated
Storage:	Store at -20°C as received.
Stability:	Stable for 12 months from date of receipt.
Predicted Protein Size:	21 kDa
Gene Name:	methyl-CpG binding domain protein 3 like 1
Database Link:	<a href="#">NP_660209</a> <a href="#">Entrez Gene 85509 Human</a> <a href="#">Q8WWY6</a>
Background:	This gene encodes a protein that is related to methyl-CpG-binding proteins but lacks the methyl-CpG binding domain. The protein is localized to discrete areas in the nucleus, and expression appears to be restricted to round spermatids, suggesting that the protein plays a role in the postmeiotic stages of male germ cell development.
Synonyms:	MBD3L
Note:	Immunogen Sequence Homology: Horse: 100%; Human: 100%; Zebrafish: 90%; Dog: 86%; Rat: 79%; Bovine: 79%; Pig: 75%; Mouse: 75%; Rabbit: 75%; Guinea pig: 75%



[View online »](#)

**Product images:**


WB Suggested Anti-MBD3L1 Antibody; Titration:  
1.0 ug/ml; Positive Control: HT1080 Whole Cell