

Product datasheet for **TA337899**

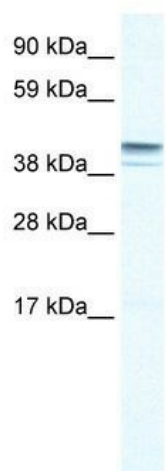
ZNF627 Rabbit Polyclonal Antibody

Product data:

Product Type:	Primary Antibodies
Applications:	WB
Recommended Dilution:	WB
Reactivity:	Human
Host:	Rabbit
Isotype:	IgG
Clonality:	Polyclonal
Immunogen:	The immunogen for anti-ZNF627 antibody: synthetic peptide directed towards the N terminal of human ZNF627. Synthetic peptide located within the following region: GKQWEDQNIEDPFKIPRRNISHIPERLCESKEGGQGEETFSQIPDGILNK
Formulation:	Liquid. Purified antibody supplied in 1x PBS buffer with 0.09% (w/v) sodium azide and 2% sucrose. <i>Note that this product is shipped as lyophilized powder to China customers.</i>
Purification:	Affinity Purified
Conjugation:	Unconjugated
Storage:	Store at -20°C as received.
Stability:	Stable for 12 months from date of receipt.
Predicted Protein Size:	53 kDa
Gene Name:	zinc finger protein 627
Database Link:	NP_660338 Entrez Gene 199692 Human Q7L945
Background:	Located on chromosome 19, this gene encodes for zinc finger protein 627.
Synonyms:	FLJ90365
Note:	Immunogen Sequence Homology: Human: 100%
Protein Families:	Transcription Factors



[View online »](#)

Product images:

WB Suggested Anti-ZNF627 Antibody Titration:
0.2-1 ug/ml; ELISA Titer: 1:312500; Positive
Control: Jurkat cell lysate