

## Product datasheet for **TA337898**

### Nle1 Rabbit Polyclonal Antibody

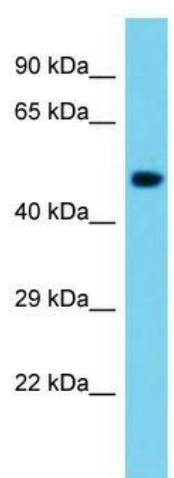
#### Product data:

Product Type:	Primary Antibodies
Applications:	WB
Recommended Dilution:	WB
Reactivity:	Mouse
Host:	Rabbit
Isotype:	IgG
Clonality:	Polyclonal
Immunogen:	The immunogen for anti-Nle1 antibody is: synthetic peptide directed towards the C-terminal region of Mouse Nle1. Synthetic peptide located within the following region: FTLFLWSPAEDKKPLARMTGHQALINQVLFSPDSRIVASASFDKSIKLWD
Formulation:	Liquid. Purified antibody supplied in 1x PBS buffer with 0.09% (w/v) sodium azide and 2% sucrose. <i>Note that this product is shipped as lyophilized powder to China customers.</i>
Purification:	Affinity Purified
Conjugation:	Unconjugated
Storage:	Store at -20°C as received.
Stability:	Stable for 12 months from date of receipt.
Predicted Protein Size:	53 kDa
Gene Name:	notchless homolog 1 (Drosophila)
Database Link:	<a href="#">NP_663406</a> <a href="#">Entrez Gene 217011 Mouse</a> <a href="#">Q8VEJ4</a>
Background:	The function of this protein remains unknown.
Synonyms:	FLJ10458; Nle
Note:	Immunogen Sequence Homology: Rat: 100%; Human: 100%; Dog: 93%; Pig: 93%; Horse: 93%; Mouse: 93%; Bovine: 93%; Rabbit: 93%; Guinea pig: 93%; Zebrafish: 77%



[View online »](#)

## Product images:



Host: Rabbit; Target Name: Nle1; Sample Tissue: Mouse Brain lysates; Antibody Dilution: 1.0 ug/ml