

Product datasheet for **TA337897**

MUC15 Rabbit Polyclonal Antibody

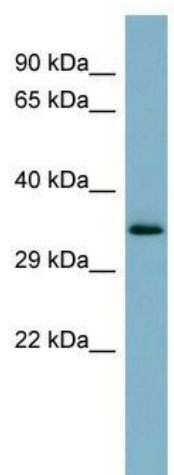
Product data:

Product Type:	Primary Antibodies
Applications:	WB
Recommended Dilution:	WB
Reactivity:	Human
Host:	Rabbit
Isotype:	IgG
Clonality:	Polyclonal
Immunogen:	The immunogen for anti-MUC15 antibody: synthetic peptide directed towards the middle region of human MUC15. Synthetic peptide located within the following region: KFTNNSKLPNTSDPQKENRNTGIVFGAILGAILGVSLTLVGYLLCGKR
Formulation:	Liquid. Purified antibody supplied in 1x PBS buffer with 0.09% (w/v) sodium azide and 2% sucrose.
Purification:	Affinity Purified
Conjugation:	Unconjugated
Storage:	Store at -20°C as received.
Stability:	Stable for 12 months from date of receipt.
Predicted Protein Size:	36 kDa
Gene Name:	mucin 15, cell surface associated
Database Link:	NP_663625 Entrez Gene 143662 Human Q8N387
Background:	May play a role in the cell adhesion to the extracellular matrix.
Synonyms:	MUC-15; PAS3; PASIII
Note:	Immunogen Sequence Homology: Human: 100%; Rabbit: 100%; Bovine: 90%; Mouse: 85%; Pig: 79%; Horse: 79%; Guinea pig: 79%; Dog: 77%
Protein Families:	Secreted Protein, Transmembrane



[View online »](#)

Product images:



WB Suggested Anti-MUC15 Antibody Titration:
0.2-1 ug/ml; ELISA Titer: 1: 312500; Positive
Control: OVCAR-3 cell lysate