

## Product datasheet for **TA337894**

### HMGA1 Rabbit Polyclonal Antibody

#### Product data:

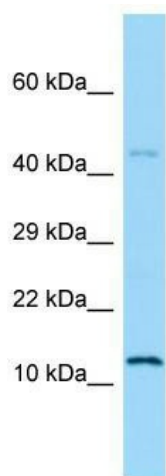
Product Type:	Primary Antibodies
Applications:	WB
Recommended Dilution:	WB
Reactivity:	Rat
Host:	Rabbit
Isotype:	IgG
Clonality:	Polyclonal
Immunogen:	The immunogen for anti-Hmga1 antibody is: synthetic peptide directed towards the N-terminal region of Rat Hmga1. Synthetic peptide located within the following region: MSESGSKSSQPLASKQEKGTEKRGRGRPRKQPSVSPGTALVGSQKEPSE
Formulation:	Liquid. Purified antibody supplied in 1x PBS buffer with 0.09% (w/v) sodium azide and 2% sucrose. <i>Note that this product is shipped as lyophilized powder to China customers.</i>
Purification:	Affinity Purified
Conjugation:	Unconjugated
Storage:	Store at -20°C as received.
Stability:	Stable for 12 months from date of receipt.
Predicted Protein Size:	11 kDa
Gene Name:	high mobility group AT-hook 1
Database Link:	<a href="#">NP_665906</a> <a href="#">Entrez Gene 117062 Rat P17096</a>
Background:	Hmga1 is expressed in metastatic prostate tumors and may be associated with transformation.
Synonyms:	HMG-R; HMGA1A; HMG1Y
Note:	Immunogen Sequence Homology: Dog: 100%; Pig: 100%; Rat: 100%; Horse: 100%; Human: 100%; Mouse: 100%; Rabbit: 100%; Bovine: 93%; Guinea pig: 93%



[View online »](#)

**Protein Families:** Druggable Genome, Stem cell - Pluripotency, Stem cell relevant signaling - JAK/STAT signaling pathway, Transcription Factors

**Product images:**



WB Suggested Anti-Hmga1 Antibody; Titration: 2 ug/ml; Positive Control: Rat Small Intestine