

Product datasheet for **TA337893**

Prepl Rabbit Polyclonal Antibody

Product data:

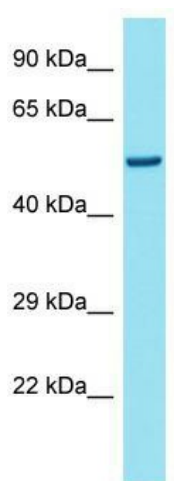
| | |
|-------------------------|---|
| Product Type: | Primary Antibodies |
| Applications: | WB |
| Recommended Dilution: | WB |
| Reactivity: | Mouse |
| Host: | Rabbit |
| Isotype: | IgG |
| Clonality: | Polyclonal |
| Immunogen: | The immunogen for anti-Prepl antibody is: synthetic peptide directed towards the C-terminal region of Mouse Prepl. Synthetic peptide located within the following region: LRAVTLEAPFLDVLNTMLDRTLPTLLEELEEWGNPSSDEKHKNYIKRYCP |
| Formulation: | Liquid. Purified antibody supplied in 1x PBS buffer with 0.09% (w/v) sodium azide and 2% sucrose. <i>Note that this product is shipped as lyophilized powder to China customers.</i> |
| Purification: | Affinity Purified |
| Conjugation: | Unconjugated |
| Storage: | Store at -20°C as received. |
| Stability: | Stable for 12 months from date of receipt. |
| Predicted Protein Size: | 50 kDa |
| Gene Name: | prolyl endopeptidase-like |
| Database Link: | NP_666096 Entrez Gene 213760 Mouse Q8C167 |
| Background: | Prepl is a probable serine peptidase whose precise substrate specificity remains unclear. It does not cleave peptides after a arginine or lysine residue. |
| Synonyms: | FLJ16627; KIAA0436; OTTHUMP00000202420; OTTHUMP00000202421; OTTHUMP00000202424; OTTHUMP00000202425; OTTHUMP00000202426; Prolylendopeptidase-like |



[View online »](#)

Note: Immunogen Sequence Homology: Dog: 100%; Pig: 100%; Rat: 100%; Horse: 100%; Human: 100%; Mouse: 100%; Rabbit: 100%; Bovine: 93%; Guinea pig: 86%

Product images:



Host: Rabbit; Target Name: Prepl; Sample Tissue: Mouse Heart lysates; Antibody Dilution: 1.0 ug/ml