

Product datasheet for **TA337891**

Intersectin 2 (ITSN2) Rabbit Polyclonal Antibody

Product data:

Product Type:	Primary Antibodies
Applications:	WB
Recommended Dilution:	WB
Reactivity:	Human
Host:	Rabbit
Isotype:	IgG
Clonality:	Polyclonal
Immunogen:	The immunogen for anti-ITSN2 antibody is: synthetic peptide directed towards the C-terminal region of Human ITSN2. Synthetic peptide located within the following region: TFTEGEEILVTQKDGEWWTGSIGDRSGIFPSNYVKPKDQESFGSASKSGA
Formulation:	Liquid. Purified antibody supplied in 1x PBS buffer with 0.09% (w/v) sodium azide and 2% sucrose. <i>Note that this product is shipped as lyophilized powder to China customers.</i>
Purification:	Affinity Purified
Conjugation:	Unconjugated
Storage:	Store at -20°C as received.
Stability:	Stable for 12 months from date of receipt.
Predicted Protein Size:	142 kDa
Gene Name:	intersectin 2
Database Link:	NP_671494 Entrez Gene 50618 Human Q9NZM3
Background:	This gene encodes a cytoplasmic protein which contains SH3 domains. This protein is a member of a family of proteins involved in clathrin-mediated endocytosis. Intersectin 2 is thought to regulate the formation of clathrin-coated vesicles and also may function in the induction of T cell antigen receptor (TCR) endocytosis. Alternatively spliced transcript variants have been found for this gene that encode three distinct isoforms. Additional variants have been found but their full length nature has not been determined.



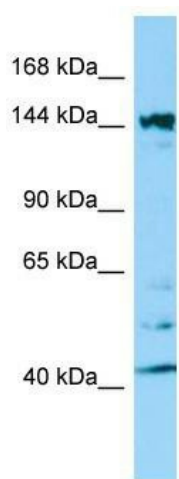
[View online »](#)

Synonyms: PRO2015; SH3D1B; SH3P18; SWA; SWAP

Note: Immunogen Sequence Homology: Pig: 100%; Human: 100%; Dog: 93%; Horse: 93%; Rabbit: 93%; Bovine: 86%; Mouse: 85%; Rat: 79%

Protein Families: Druggable Genome

Product images:



WB Suggested Anti-ITSN2 Antibody; Titration: 1.0 ug/ml; Positive Control: HepG2 Whole Cell