

Product datasheet for **TA337890**

MMP21 Rabbit Polyclonal Antibody

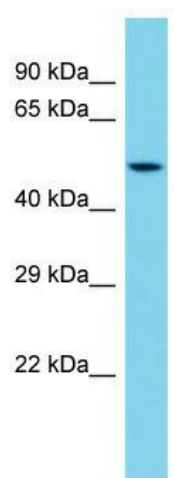
Product data:

Product Type:	Primary Antibodies
Applications:	WB
Recommended Dilution:	WB
Reactivity:	Mouse
Host:	Rabbit
Isotype:	IgG
Clonality:	Polyclonal
Immunogen:	The immunogen for anti-Mmp21 antibody is: synthetic peptide directed towards the middle region of Mouse Mmp21. Synthetic peptide located within the following region: YIPQEPAFELDWADRKAIQRLYGSCCKGSFDTVFDWIRKERNQYGEVRVR
Formulation:	Liquid. Purified antibody supplied in 1x PBS buffer with 0.09% (w/v) sodium azide and 2% sucrose.
Purification:	Affinity Purified
Conjugation:	Unconjugated
Storage:	Store at -20°C as received.
Stability:	Stable for 12 months from date of receipt.
Predicted Protein Size:	50 kDa
Gene Name:	matrix metalloproteinase 21
Database Link:	NP_671724 Entrez Gene 214766 Mouse Q8N119
Background:	The function of this protein remains unknown.
Synonyms:	HTX7; MMP-21
Note:	Immunogen Sequence Homology: Pig: 100%; Rat: 100%; Horse: 100%; Human: 100%; Mouse: 100%; Guinea pig: 100%; Dog: 92%; Rabbit: 86%; Zebrafish: 77%
Protein Families:	Druggable Genome



[View online »](#)

Product images:



Host: Rabbit; Target Name: Mmp21; Sample
Tissue: Mouse Liver lysates; Antibody Dilution: 1.0
ug/ml