

## Product datasheet for **TA337889**

### GREB1 Rabbit Polyclonal Antibody

#### Product data:

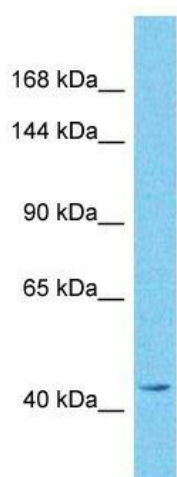
Product Type:	Primary Antibodies
Applications:	WB
Recommended Dilution:	WB
Reactivity:	Human
Host:	Rabbit
Isotype:	IgG
Clonality:	Polyclonal
Immunogen:	The immunogen for anti-GREB1 antibody is: synthetic peptide directed towards the N-terminal region of Human GREB1. Synthetic peptide located within the following region: MGNSYAGQLKTTTFEEVLHNSIEASLRSNNLVPRPIFSQLYLEAEQQLAA
Formulation:	Liquid. Purified antibody supplied in 1x PBS buffer with 0.09% (w/v) sodium azide and 2% sucrose. <i>Note that this product is shipped as lyophilized powder to China customers.</i>
Purification:	Affinity Purified
Conjugation:	Unconjugated
Storage:	Store at -20°C as received.
Stability:	Stable for 12 months from date of receipt.
Predicted Protein Size:	43 kDa
Gene Name:	growth regulation by estrogen in breast cancer 1
Database Link:	<a href="#">NP_683701</a> <a href="#">Entrez Gene 9687 Human</a> <a href="#">Q4ZG55</a>
Background:	This gene is an estrogen-responsive gene that is an early response gene in the estrogen receptor-regulated pathway. It is thought to play an important role in hormone-responsive tissues and cancer. Three alternatively spliced transcript variants encoding distinct isoforms have been found for this gene.
Synonyms:	KIAA0575



[View online »](#)

**Note:** Immunogen Sequence Homology: Dog: 100%; Horse: 100%; Human: 100%; Bovine: 100%; Rabbit: 100%; Mouse: 93%; Pig: 91%; Rat: 85%; Zebrafish: 85%; Guinea pig: 85%

### Product images:



Host: Rabbit; Target Name: GREB1; Sample Tissue: Pancreas Tumor lysates; Antibody Dilution: 1.0 ug/ml