

Product datasheet for **TA337888**

GREB1 Rabbit Polyclonal Antibody

Product data:

Product Type:	Primary Antibodies
Applications:	WB
Recommended Dilution:	WB
Reactivity:	Human
Host:	Rabbit
Isotype:	IgG
Clonality:	Polyclonal
Immunogen:	The immunogen for anti-GREB1 antibody: synthetic peptide directed towards the middle region of human GREB1. Synthetic peptide located within the following region: DNGHNALLGFSGNCVCGCKKGFYCFTEFSNHINLKLTTQPKKQKHLKYYL
Formulation:	Liquid. Purified antibody supplied in 1x PBS buffer with 0.09% (w/v) sodium azide and 2% sucrose. <i>Note that this product is shipped as lyophilized powder to China customers.</i>
Purification:	Affinity Purified
Conjugation:	Unconjugated
Storage:	Store at -20°C as received.
Stability:	Stable for 12 months from date of receipt.
Predicted Protein Size:	43 kDa
Gene Name:	growth regulation by estrogen in breast cancer 1
Database Link:	NP_683701 Entrez Gene 9687 Human Q4ZG55
Background:	This gene is an estrogen-responsive gene that is an early response gene in the estrogen receptor-regulated pathway. It is thought to play an important role in hormone-responsive tissues and cancer. This gene is an estrogen-responsive gene that is an early response gene in the estrogen receptor-regulated pathway. It is thought to play an important role in hormone-responsive tissues and cancer. Three alternatively spliced transcript variants encoding distinct isoforms have been found for this gene.



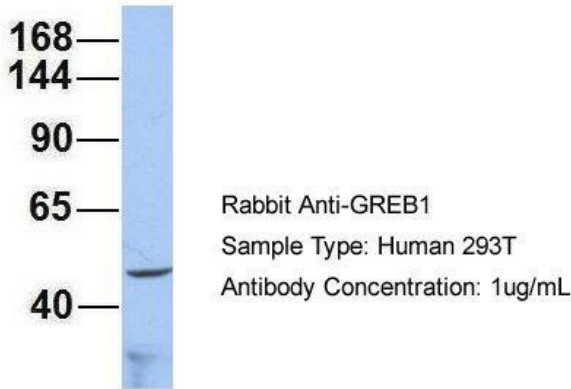
[View online »](#)

Synonyms: KIAA0575

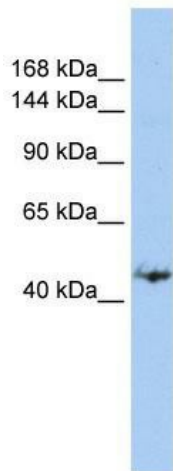
Note: Immunogen Sequence Homology: Dog: 100%; Pig: 100%; Rat: 100%; Horse: 100%; Human: 100%; Mouse: 100%; Bovine: 100%; Rabbit: 100%; Guinea pig: 100%; Zebrafish: 93%

Product images:

GREB1



Host: Rabbit; Target Name: GREB1; Sample Tissue: 293T; Antibody Dilution: 1.0 ug/ml



WB Suggested Anti-GREB1 Antibody Titration: 0.2-1 ug/ml; ELISA Titer: 1:312500; Positive Control: MCF7 cell lysate. There is BioGPS gene expression data showing that GREB1 is expressed in MCF7