

## Product datasheet for **TA337887**

### GPRC6A Rabbit Polyclonal Antibody

#### Product data:

|                         |   |
|-------------------------|---|
| Product Type:           | Primary Antibodies  |
| Applications:           | WB  |
| Recommended Dilution:   | WB  |
| Reactivity:             | Human   |
| Host:                   | Rabbit  |
| Isotype:                | IgG   |
| Clonality:              | Polyclonal  |
| Immunogen:              | The immunogen for anti-GPRC6A antibody is: synthetic peptide directed towards the N-terminal region of Human GPRC6A. Synthetic peptide located within the following region: SQPCQTPDDFVAATSPGHIIIIGGLFAIHEKMLSSSEDSPPRPQIQECVGF   |
| Formulation:            | Liquid. Purified antibody supplied in 1x PBS buffer with 0.09% (w/v) sodium azide and 2% sucrose.<br><i>Note that this product is shipped as lyophilized powder to China customers.</i>   |
| Purification:           | Affinity Purified   |
| Conjugation:            | Unconjugated  |
| Storage:                | Store at -20°C as received.   |
| Stability:              | Stable for 12 months from date of receipt.  |
| Predicted Protein Size: | 103 kDa   |
| Gene Name:              | G protein-coupled receptor class C group 6 member A   |
| Database Link:          | <a href="#">NP_683766</a><br><a href="#">Entrez Gene 222545 Human Q5T6X5</a>  |
| Background:             | Members of family C of the G protein-coupled receptor (GPCR) superfamily, such as GPRC6A, are characterized by an evolutionarily conserved amino acid-sensing motif linked to an intramembranous 7-transmembrane loop region. Several members of GPCR family C, including GPRC6A, also have a long N-terminal domain. |
| Synonyms:               | bA86F4.3; GPCR  |

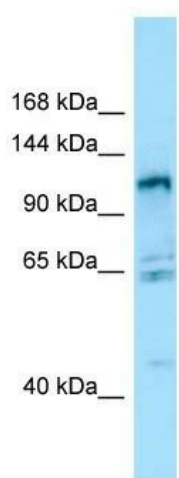


[View online »](#)

**Note:** Immunogen Sequence Homology: Human: 100%; Pig: 79%; Mouse: 79%; Rabbit: 79%; Dog: 77%; Rat: 77%

**Protein Families:** Druggable Genome, Transmembrane

**Product images:**



WB Suggested Anti-GPRC6A Antibody; Titration: 1.0 ug/ml; Positive Control: 293T Whole Cell