

## Product datasheet for **TA337886**

### IPMK Rabbit Polyclonal Antibody

#### Product data:

Product Type:	Primary Antibodies
Applications:	WB
Recommended Dilution:	WB
Reactivity:	Human
Host:	Rabbit
Isotype:	IgG
Clonality:	Polyclonal
Immunogen:	The immunogen for anti-IPMK antibody is: synthetic peptide directed towards the middle region of Human IPMK. Synthetic peptide located within the following region: SDSYETENQHYGRSLTKETIKDGVSRFFHNGYCLRKDAVAASIQKIEKIL
Formulation:	Liquid. Purified antibody supplied in 1x PBS buffer with 0.09% (w/v) sodium azide and 2% sucrose. <i>Note that this product is shipped as lyophilized powder to China customers.</i>
Purification:	Affinity Purified
Conjugation:	Unconjugated
Storage:	Store at -20°C as received.
Stability:	Stable for 12 months from date of receipt.
Predicted Protein Size:	45 kDa
Gene Name:	inositol polyphosphate multikinase
Database Link:	<a href="#">NP_689416</a> <a href="#">Entrez Gene 253430 Human</a> <a href="#">Q8NFU5</a>
Background:	This gene encodes a member of the inositol phosphokinase family. The encoded protein has 3-kinase, 5-kinase and 6-kinase activities on phosphorylated inositol substrates. The encoded protein plays an important role in the biosynthesis of inositol 1,3,4,5,6-pentakisphosphate, and has a preferred 5-kinase activity. This gene may play a role in nuclear mRNA export. Pseudogenes of this gene are located on the long arm of chromosome 13 and the short arm of chromosome 19.

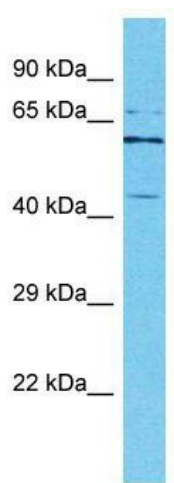

[View online »](#)

**Synonyms:** Impk; inositol polyphosphate kinase 2; inositol polyphosphate multikinase; Ipk2

**Note:** Immunogen Sequence Homology: Human: 100%; Pig: 93%; Rat: 93%; Horse: 93%; Bovine: 93%; Rabbit: 93%; Guinea pig: 93%; Yeast: 85%; Mouse: 79%; Zebrafish: 77%

**Protein Pathways:** Inositol phosphate metabolism

### Product images:



Host: Rabbit; Target Name: IPMK; Sample Tissue: HeLa Whole cell lysates; Antibody Dilution: 1.0 ug/ml