

Product datasheet for **TA337885**

TAS1R2 Rabbit Polyclonal Antibody

Product data:

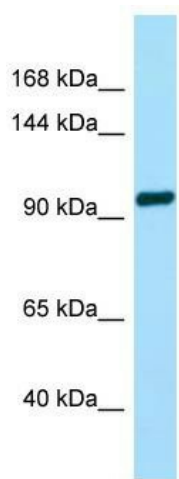
Product Type:	Primary Antibodies
Applications:	WB
Recommended Dilution:	WB
Reactivity:	Human
Host:	Rabbit
Isotype:	IgG
Clonality:	Polyclonal
Immunogen:	The immunogen for anti-TAS1R2 antibody is: synthetic peptide directed towards the C-terminal region of Human TAS1R2. Synthetic peptide located within the following region: ISWHTINNTIPMSMCSKRCQSGQKKKPVGIHVCCFECIDCLPGTFLNHTE
Formulation:	Liquid. Purified antibody supplied in 1x PBS buffer with 0.09% (w/v) sodium azide and 2% sucrose. <i>Note that this product is shipped as lyophilized powder to China customers.</i>
Purification:	Affinity Purified
Conjugation:	Unconjugated
Storage:	Store at -20°C as received.
Stability:	Stable for 12 months from date of receipt.
Predicted Protein Size:	93 kDa
Gene Name:	taste 1 receptor member 2
Database Link:	NP_689418 Entrez Gene 80834 Human Q8TE23
Background:	TAS1R2 is a putative taste receptor. TAS1R2/TAS1R3 recognizes diverse natural and synthetic sweeteners.
Synonyms:	GPR71; T1R2; TR2
Note:	Immunogen Sequence Homology: Human: 100%; Pig: 86%; Bovine: 79%
Protein Families:	Druggable Genome, Transmembrane



[View online »](#)

Protein Pathways: Taste transduction

Product images:



WB Suggested Anti-TAS1R2 Antibody; Titration:
1.0 ug/ml; Positive Control: Fetal Brain