

Product datasheet for **TA337883**

CDC42EP1 Rabbit Polyclonal Antibody

Product data:

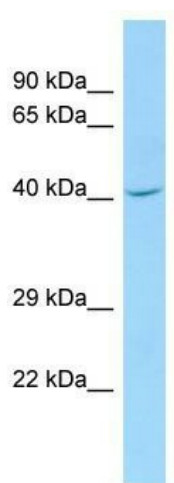
Product Type:	Primary Antibodies
Applications:	WB
Recommended Dilution:	WB
Reactivity:	Human
Host:	Rabbit
Isotype:	IgG
Clonality:	Polyclonal
Immunogen:	The immunogen for anti-CDC42EP1 antibody is: synthetic peptide directed towards the N-terminal region of Human CDC42EP1. Synthetic peptide located within the following region: HTMHVGRGGDVFVDTSFLSNHGGSSGSTHRSPRSFLAKKLQVRRVGAPP
Formulation:	Liquid. Purified antibody supplied in 1x PBS buffer with 0.09% (w/v) sodium azide and 2% sucrose. <i>Note that this product is shipped as lyophilized powder to China customers.</i>
Purification:	Affinity Purified
Conjugation:	Unconjugated
Storage:	Store at -20°C as received.
Stability:	Stable for 12 months from date of receipt.
Predicted Protein Size:	40 kDa
Gene Name:	CDC42 effector protein 1
Database Link:	NP_689449 Entrez Gene 11135 Human Q00587
Background:	CDC42 is a member of the Rho GTPase family that regulates multiple cellular activities, including actin polymerization. The protein encoded by this gene is a CDC42 binding protein that mediates actin cytoskeleton reorganization at the plasma membrane. This protein is secreted and is primarily found in bone marrow.
Synonyms:	BORG5; CEP1; MSE55



[View online »](#)

Note: Immunogen Sequence Homology: Human: 100%; Dog: 93%; Pig: 93%; Bovine: 93%; Rabbit: 93%; Guinea pig: 93%; Rat: 86%; Mouse: 86%

Product images:



WB Suggested Anti-CDC42EP1 Antibody; Titration: 1.0 ug/ml; Positive Control: THP-1 Whole Cell