

Product datasheet for **TA337882**

ORAI3 Rabbit Polyclonal Antibody

Product data:

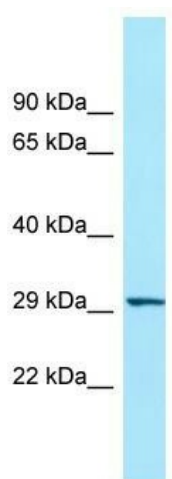
| | |
|--------------------------------|--|
| Product Type: | Primary Antibodies |
| Applications: | WB |
| Recommended Dilution: | WB |
| Reactivity: | Human |
| Host: | Rabbit |
| Isotype: | IgG |
| Clonality: | Polyclonal |
| Immunogen: | The immunogen for anti-ORAI3 antibody is: synthetic peptide directed towards the N-terminal region of Human ORAI3. Synthetic peptide located within the following region: GDAGEQAPLNPEGESPAGSATYREFVHRGYLDLMGASQHSRLRALSRRRLY |
| Formulation: | Liquid. Purified antibody supplied in 1x PBS buffer with 0.09% (w/v) sodium azide and 2% sucrose. <i>Note that this product is shipped as lyophilized powder to China customers.</i> |
| Purification: | Affinity Purified |
| Conjugation: | Unconjugated |
| Storage: | Store at -20°C as received. |
| Stability: | Stable for 12 months from date of receipt. |
| Predicted Protein Size: | 31 kDa |
| Gene Name: | ORAI calcium release-activated calcium modulator 3 |
| Database Link: | NP_689501 Entrez Gene 93129 Human Q9BRQ5 |
| Background: | ORAI3 is a key regulator or component of store-operated Ca ²⁺ channel and transcription factor NFAT nuclear import. |
| Synonyms: | TMEM142C |
| Note: | Immunogen Sequence Homology: Human: 100%; Dog: 93%; Pig: 93%; Horse: 93%; Bovine: 93%; Rat: 86%; Mouse: 86%; Guinea pig: 86%; Rabbit: 79% |



[View online »](#)

Protein Families: Transmembrane

Product images:



WB Suggested Anti-ORA13 Antibody; Titration: 1.0 ug/ml; Positive Control: Placenta