

Product datasheet for **TA337881**

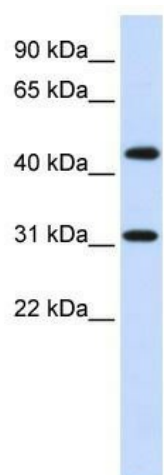
ZNF684 Rabbit Polyclonal Antibody

Product data:

Product Type:	Primary Antibodies
Applications:	WB
Recommended Dilution:	WB
Reactivity:	Human
Host:	Rabbit
Isotype:	IgG
Clonality:	Polyclonal
Immunogen:	The immunogen for anti-ZNF684 antibody: synthetic peptide directed towards the N terminal of human ZNF684. Synthetic peptide located within the following region: ANPHESSPESDYPLVDEPGKHRESKDNFLKSVLLTFNKILTMERIHYYNM
Formulation:	Liquid. Purified antibody supplied in 1x PBS buffer with 0.09% (w/v) sodium azide and 2% sucrose. <i>Note that this product is shipped as lyophilized powder to China customers.</i>
Purification:	Affinity Purified
Conjugation:	Unconjugated
Storage:	Store at -20°C as received.
Stability:	Stable for 12 months from date of receipt.
Predicted Protein Size:	44 kDa
Gene Name:	zinc finger protein 684
Database Link:	NP_689586 Entrez Gene 127396 Human Q5T5D7
Background:	ZNF684 contains 1 KRAB domain. The function of the ZNF684 protein remains unknown.
Synonyms:	MGC27466
Note:	Immunogen Sequence Homology: Human: 100%; Pig: 79%



[View online »](#)

Product images:

WB Suggested Anti-ZNF684 Antibody Titration:
0.2-1 ug/ml; ELISA Titer: 1:12500; Positive Control:
Human brain