

## Product datasheet for **TA337880**

### Spingosine 1 phosphate phosphatase 2 (SGPP2) Rabbit Polyclonal Antibody

#### Product data:

Product Type:	Primary Antibodies
Applications:	IHC, WB
Recommended Dilution:	WB, IHC
Reactivity:	Human
Host:	Rabbit
Isotype:	IgG
Clonality:	Polyclonal
Immunogen:	The immunogen for anti-SGPP2 antibody: synthetic peptide directed towards the C terminal of human SGPP2. Synthetic peptide located within the following region: SKPAESLPVIQNIPLTTYMLVLGLTKFAVGIVLILLVRQLVQNLSLQVL
Formulation:	Liquid. Purified antibody supplied in 1x PBS buffer with 0.09% (w/v) sodium azide and 2% sucrose. <i>Note that this product is shipped as lyophilized powder to China customers.</i>
Purification:	Protein A purified
Conjugation:	Unconjugated
Storage:	Store at -20°C as received.
Stability:	Stable for 12 months from date of receipt.
Predicted Protein Size:	37 kDa
Gene Name:	sphingosine-1-phosphate phosphatase 2
Database Link:	<a href="#">NP_689599</a> <a href="#">Entrez Gene 130367 Human</a> <a href="#">Q8IWX5</a>
Background:	Sphingosine-1-phosphate (S1P) is a bioactive sphingolipid metabolite that regulates diverse biologic processes. SGPP2 catalyzes the degradation of S1P (Ogawa et al., 2003 [PubMed 12411432]). [supplied by OMIM, Jun 2009]. ##Evidence-Data-START## Transcript exon combination :: BC134342.1, AF542512.1 [ECO:0000332] RNAseq introns :: single sample supports all introns ERS025081, ERS025082 [ECO:0000348] ##Evidence-Data-END##
Synonyms:	SPP2; SPPase2



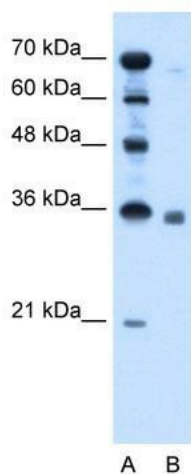
[View online »](#)

**Note:** Immunogen Sequence Homology: Human: 100%; Bovine: 93%; Rabbit: 93%; Pig: 86%; Horse: 86%; Mouse: 86%; Guinea pig: 86%; Rat: 85%

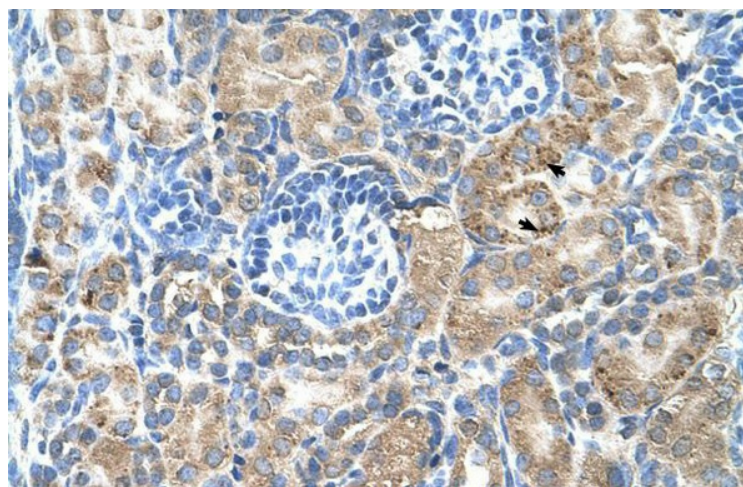
**Protein Families:** Transmembrane

**Protein Pathways:** Sphingolipid metabolism

**Product images:**



WB Suggested Anti-SGPP2 Antibody Titration: 2.5 ug/ml; Positive Control: HepG2 cell lysate



Human kidney