

Product datasheet for **TA337875**

RWDD4A (RWDD4) Rabbit Polyclonal Antibody

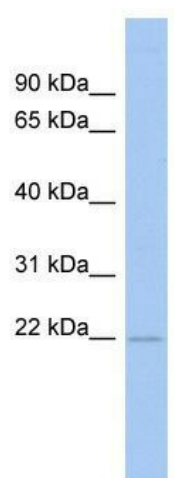
Product data:

Product Type:	Primary Antibodies
Applications:	WB
Recommended Dilution:	WB
Reactivity:	Human
Host:	Rabbit
Isotype:	IgG
Clonality:	Polyclonal
Immunogen:	The immunogen for anti-RWDD4A antibody: synthetic peptide directed towards the N terminal of human RWDD4A. Synthetic peptide located within the following region: MSANEDQEMELEALRSIYEGDESFRELSPVSFQYRIGENGDPKAFLIEIS
Formulation:	Liquid. Purified antibody supplied in 1x PBS buffer with 0.09% (w/v) sodium azide and 2% sucrose.
Purification:	Affinity Purified
Conjugation:	Unconjugated
Storage:	Store at -20°C as received.
Stability:	Stable for 12 months from date of receipt.
Predicted Protein Size:	21 kDa
Gene Name:	RWD domain containing 4
Database Link:	NP_689895 Entrez Gene 201965 Human Q6NW29
Background:	The specific function of this protein remains unknown.
Synonyms:	FAM28A; RWDD4A
Note:	Immunogen Sequence Homology: Dog: 100%; Pig: 100%; Rat: 100%; Horse: 100%; Human: 100%; Mouse: 100%; Bovine: 100%; Rabbit: 100%; Guinea pig: 92%; Zebrafish: 77%



[View online »](#)

Product images:



WB Suggested Anti-RWDD4A Antibody Titration:
0.2-1 ug/ml; ELISA Titer: 1: 1562500; Positive
Control: Human Intestine