

Product datasheet for **TA337873**

KHDRBS2 Rabbit Polyclonal Antibody

Product data:

Product Type:	Primary Antibodies
Applications:	WB
Recommended Dilution:	WB
Reactivity:	Human
Host:	Rabbit
Isotype:	IgG
Clonality:	Polyclonal
Immunogen:	The immunogen for anti-KHDRBS2 antibody: synthetic peptide directed towards the N terminal of human KHDRBS2. Synthetic peptide located within the following region: EEIEKFQGS DGKKEDEEKYLDVISNKNIKLSERVLIPVKQYPKFNFVGK
Formulation:	Liquid. Purified antibody supplied in 1x PBS buffer with 0.09% (w/v) sodium azide and 2% sucrose. <i>Note that this product is shipped as lyophilized powder to China customers.</i>
Purification:	Affinity Purified
Conjugation:	Unconjugated
Storage:	Store at -20°C as received.
Stability:	Stable for 12 months from date of receipt.
Predicted Protein Size:	39 kDa
Gene Name:	KH RNA binding domain containing, signal transduction associated 2
Database Link:	NP_689901 Entrez Gene 202559 Human Q5VWX1



[View online »](#)

Background:

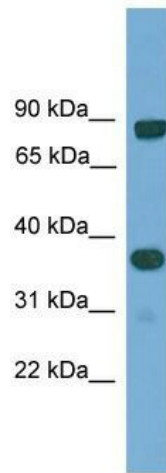
KHDRBS2 is a RNA-binding protein that plays a role in the regulation of alternative splicing and influences mRNA splice site selection and exon inclusion. Its phosphorylation by FYN inhibits its ability to regulate splice site selection. KHDRBS2 induces an increased concentration-dependent incorporation of exon in CD44 pre-mRNA by direct binding to purine-rich exonic enhancer. KHDRBS2 may function as an adapter protein for Src kinases during mitosis. KHDRBS2 binds both poly(A) and poly(U) homopolymers. Phosphorylation by PTK6 inhibits its RNA-binding ability.

Synonyms:

SLM-1; SLM1

Note:

Immunogen Sequence Homology: Dog: 100%; Pig: 100%; Rat: 100%; Horse: 100%; Human: 100%; Mouse: 100%; Guinea pig: 100%; Rabbit: 93%; Bovine: 86%

Product images:

WB Suggested Anti-KHDRBS2 Antibody Titration:
0.2-1 ug/ml; ELISA Titer: 1: 312500; Positive
Control: Human Lung