

Product datasheet for **TA337870**

Glypican 2 (GPC2) Rabbit Polyclonal Antibody

Product data:

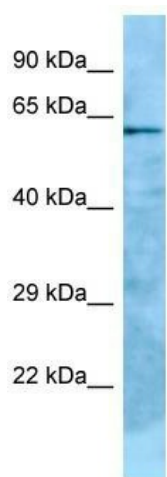
Product Type:	Primary Antibodies
Applications:	WB
Recommended Dilution:	WB
Reactivity:	Human
Host:	Rabbit
Isotype:	IgG
Clonality:	Polyclonal
Immunogen:	The immunogen for anti-GPC2 antibody is: synthetic peptide directed towards the C-terminal region of Human GPC2. Synthetic peptide located within the following region: GRLWSMVTEEEERPTTAAGTNLHRLVWELRERLARMRGFWARLSLTVCGDS
Formulation:	Liquid. Purified antibody supplied in 1x PBS buffer with 0.09% (w/v) sodium azide and 2% sucrose. <i>Note that this product is shipped as lyophilized powder to China customers.</i>
Purification:	Affinity Purified
Conjugation:	Unconjugated
Storage:	Store at -20°C as received.
Stability:	Stable for 12 months from date of receipt.
Predicted Protein Size:	58 kDa
Gene Name:	glypican 2
Database Link:	NP_689955 Entrez Gene 221914 Human Q8N158
Background:	GPC2 is a cell surface proteoglycan that bears heparan sulfate. GPC2 may fulfill a function related to the motile behaviors of developing neurons.
Synonyms:	DKFZp547M109; FLJ38962
Note:	Immunogen Sequence Homology: Pig: 100%; Rat: 100%; Human: 100%; Mouse: 100%; Guinea pig: 100%; Dog: 92%; Horse: 92%; Bovine: 92%; Rabbit: 92%; Zebrafish: 92%



[View online »](#)

Protein Families: Druggable Genome

Product images:



WB Suggested Anti-GPC2 Antibody; Titration: 1.0 ug/ml; Positive Control: HCT15 Whole Cell