

## Product datasheet for **TA337869**

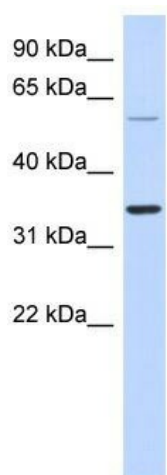
### ASPRV1 Rabbit Polyclonal Antibody

#### Product data:

Product Type:	Primary Antibodies
Applications:	WB
Recommended Dilution:	WB
Reactivity:	Human
Host:	Rabbit
Isotype:	IgG
Clonality:	Polyclonal
Immunogen:	The immunogen for anti-ASPRV1 antibody: synthetic peptide directed towards the middle region of human SASP. Synthetic peptide located within the following region: RGEALGVYNRLSPQDQGDYGTVEALLKAFGVPGAAPSHLPKEIVFANSM
Formulation:	Liquid. Purified antibody supplied in 1x PBS buffer with 0.09% (w/v) sodium azide and 2% sucrose. <i>Note that this product is shipped as lyophilized powder to China customers.</i>
Purification:	Affinity Purified
Conjugation:	Unconjugated
Storage:	Store at -20°C as received.
Stability:	Stable for 12 months from date of receipt.
Predicted Protein Size:	37 kDa
Gene Name:	aspartic peptidase, retroviral-like 1
Database Link:	<a href="#">NP_690005</a> <a href="#">Entrez Gene 151516 Human</a> <a href="#">Q53RT3</a>
Background:	The specific function of ASPRV1 is not yet known.
Synonyms:	MUNO; SASP; SASPase; Taps
Note:	Immunogen Sequence Homology: Horse: 100%; Human: 100%; Rat: 93%; Pig: 92%; Guinea pig: 92%
Protein Families:	Druggable Genome, Protease



[View online »](#)

**Product images:**

WB Suggested Anti-ASPRV1 Antibody Titration:  
0.2-1 ug/ml; ELISA Titer: 1: 1562500; Positive  
Control: Human Lung