

Product datasheet for **TA337867**

PDIK1L Rabbit Polyclonal Antibody

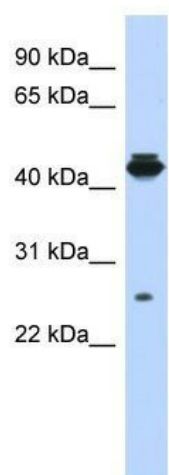
Product data:

Product Type:	Primary Antibodies
Applications:	WB
Recommended Dilution:	WB
Reactivity:	Human
Host:	Rabbit
Isotype:	IgG
Clonality:	Polyclonal
Immunogen:	The immunogen for anti-PDIK1L antibody: synthetic peptide directed towards the middle region of human PDIK1L. Synthetic peptide located within the following region: FDPRSAYYLWFMDFCDGGDMNEYLLSRKPNRKTNTSFMLQLSSALAFH
Formulation:	Liquid. Purified antibody supplied in 1x PBS buffer with 0.09% (w/v) sodium azide and 2% sucrose. <i>Note that this product is shipped as lyophilized powder to China customers.</i>
Purification:	Affinity Purified
Conjugation:	Unconjugated
Storage:	Store at -20°C as received.
Stability:	Stable for 12 months from date of receipt.
Predicted Protein Size:	38 kDa
Gene Name:	PDLIM1 interacting kinase 1 like
Database Link:	NP_690048 Entrez Gene 149420 Human Q8N165
Background:	The specific function of PDIK1L is not yet known.
Synonyms:	CLIK1L; STK35L2
Note:	Immunogen Sequence Homology: Dog: 100%; Pig: 100%; Rat: 100%; Horse: 100%; Human: 100%; Mouse: 100%; Bovine: 100%; Rabbit: 100%; Guinea pig: 100%; Zebrafish: 92%
Protein Families:	Druggable Genome, Protein Kinase



[View online »](#)

Product images:



WB Suggested Anti-PDIK1L Antibody Titration:
0.2-1 ug/ml; ELISA Titer: 1: 312500; Positive
Control: MCF7 cell lysate