

Product datasheet for **TA337863**

NIRF (UHRF2) Rabbit Polyclonal Antibody

Product data:

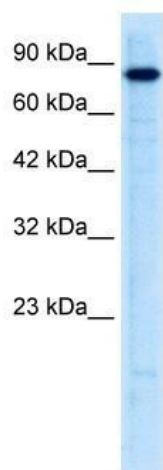
| | |
|--------------------------------|---|
| Product Type: | Primary Antibodies |
| Applications: | IHC, WB |
| Recommended Dilution: | WB, IHC |
| Reactivity: | Human |
| Host: | Rabbit |
| Isotype: | IgG |
| Clonality: | Polyclonal |
| Immunogen: | The immunogen for anti-UHRF2 antibody: synthetic peptide directed towards the N terminal of human UHRF2. Synthetic peptide located within the following region: TNKLDSPSTNSDCVAADEDVIYHIQYDEYPESGTLEMNVKDLRPRART |
| Formulation: | Liquid. Purified antibody supplied in 1x PBS buffer with 0.09% (w/v) sodium azide and 2% sucrose. <i>Note that this product is shipped as lyophilized powder to China customers.</i> |
| Purification: | Affinity Purified |
| Conjugation: | Unconjugated |
| Storage: | Store at -20°C as received. |
| Stability: | Stable for 12 months from date of receipt. |
| Predicted Protein Size: | 90 kDa |
| Gene Name: | ubiquitin like with PHD and ring finger domains 2 |
| Database Link: | NP_690856 Entrez Gene 115426 Human Q96PU4 |
| Background: | UHRF2 encodes a nuclear protein which is involved in cell-cycle regulation. The encoded protein is a ubiquitin-ligase capable of ubiquinating PCNP (PEST-containing nuclear protein), and together they may play a role in tumorigenesis. |
| Synonyms: | NIRF; RNF107; TDRD23; URF2 |
| Note: | Immunogen Sequence Homology: Human: 100%; Rabbit: 100%; Pig: 93%; Rat: 93%; Guinea pig: 93%; Dog: 86%; Horse: 86%; Mouse: 86%; Bovine: 86% |



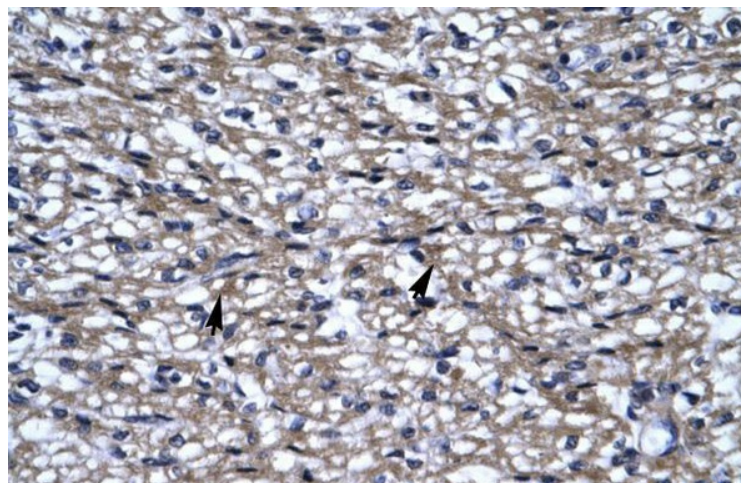
[View online »](#)

Protein Families: Druggable Genome, Transcription Factors

Product images:



WB Suggested Anti-UHRF2 Antibody Titration:
0.2-1 ug/ml; ELISA Titer: 1:62500; Positive Control:
Jurkat cell lysate



Human Heart