

Product datasheet for **TA337862**

IL4I1 Rabbit Polyclonal Antibody

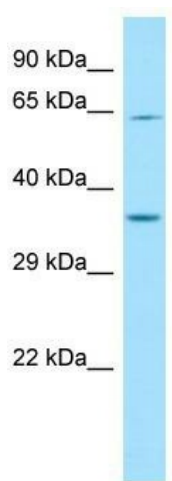
Product data:

Product Type:	Primary Antibodies
Applications:	WB
Recommended Dilution:	WB
Reactivity:	Human
Host:	Rabbit
Isotype:	IgG
Clonality:	Polyclonal
Immunogen:	The immunogen for anti-IL4I1 antibody is: synthetic peptide directed towards the C-terminal region of Human IL4I1. Synthetic peptide located within the following region: PHGWWETAVKSALRAAIKINSRKGPDASPEGHASDMEGQGHVHGVAS
Formulation:	Liquid. Purified antibody supplied in 1x PBS buffer with 0.09% (w/v) sodium azide and 2% sucrose. <i>Note that this product is shipped as lyophilized powder to China customers.</i>
Purification:	Affinity Purified
Conjugation:	Unconjugated
Storage:	Store at -20°C as received.
Stability:	Stable for 12 months from date of receipt.
Predicted Protein Size:	61 kDa
Gene Name:	interleukin 4 induced 1
Database Link:	NP_690863 Entrez Gene 259307 Human Q96RQ9
Background:	The protein encoded by this gene shares the limited similarity with L-amino acid oxidase, and contains the conserved key amino acid residues thought to be involved in catalysis and binding of the flavin adenine dinucleotide cofactor. The expression of this gene can be induced by interleukin 4 in B cells. Two alternatively spliced transcript variants of this gene encoding two distinct isoforms have been reported.
Synonyms:	FIG1; LAAO; LAO



[View online »](#)

Note:	Immunogen Sequence Homology: Human: 100%
Protein Families:	Druggable Genome
Protein Pathways:	Alanine, aspartate and glutamate metabolism, Cysteine and methionine metabolism, Metabolic pathways, Phenylalanine, tyrosine and tryptophan biosynthesis, Phenylalanine metabolism, Tryptophan metabolism, Tyrosine metabolism, Valine, leucine and isoleucine degradation

Product images:

WB Suggested Anti-IL4I1 Antibody; Titration: 1.0 ug/ml; Positive Control: Hela Whole Cell