

Product datasheet for **TA337857**

ODF4 Rabbit Polyclonal Antibody

Product data:

Product Type:	Primary Antibodies
Applications:	WB
Recommended Dilution:	WB
Reactivity:	Human
Host:	Rabbit
Isotype:	IgG
Clonality:	Polyclonal
Immunogen:	The immunogen for anti-ODF4 antibody: synthetic peptide directed towards the N terminal of human ODF4. Synthetic peptide located within the following region: MDAEYSGNEFPRSEGERDQHQRPGKERKSGEAGWGTGELGQDGRLLSSTL
Formulation:	Liquid. Purified antibody supplied in 1x PBS buffer with 0.09% (w/v) sodium azide and 2% sucrose. <i>Note that this product is shipped as lyophilized powder to China customers.</i>
Purification:	Affinity Purified
Conjugation:	Unconjugated
Storage:	Store at -20°C as received.
Stability:	Stable for 12 months from date of receipt.
Predicted Protein Size:	29 kDa
Gene Name:	outer dense fiber of sperm tails 4
Database Link:	NP_694552 Entrez Gene 146852 Human Q2M2E3



[View online »](#)

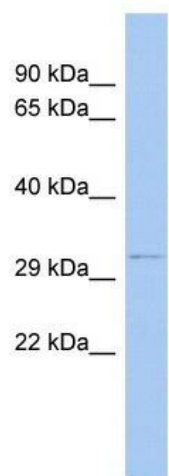
Background: ODF4 is the component of the outer dense fibers (ODF) of spermatozoa which could be involved in sperm tail structure, sperm movement and general organization of cellular cytoskeleton. This gene encodes a protein that is localized in the outer dense fibers of the tails of mature sperm. This protein is thought to have some important role in the sperm tail. Sequence Note: The RefSeq record was created from transcript and genomic sequence data to make the sequence consistent with the reference genome assembly. The genomic coordinates used for the transcript record were based on transcript alignments.

Synonyms: CT134; CT136; OPPO1

Note: Immunogen Sequence Homology: Human: 100%

Protein Families: Transmembrane

Product images:



WB Suggested Anti-ODF4 Antibody Titration: 0.2-1 ug/ml; ELISA Titer: 1: 62500; Positive Control: Human brain