

Product datasheet for **TA337856**

TMEM74 Rabbit Polyclonal Antibody

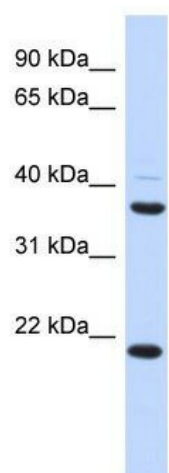
Product data:

Product Type:	Primary Antibodies
Applications:	WB
Recommended Dilution:	WB
Reactivity:	Human
Host:	Rabbit
Isotype:	IgG
Clonality:	Polyclonal
Immunogen:	The immunogen for anti-TMEM74 antibody: synthetic peptide directed towards the middle region of human TMEM74. Synthetic peptide located within the following region: ERLEKESARLGAHLDRCVIAGLCLLLTGGVILSCLLMMSMWKGELYRRNR
Formulation:	Liquid. Purified antibody supplied in 1x PBS buffer with 0.09% (w/v) sodium azide and 2% sucrose.
Purification:	Affinity Purified
Conjugation:	Unconjugated
Storage:	Store at -20°C as received.
Stability:	Stable for 12 months from date of receipt.
Predicted Protein Size:	33 kDa
Gene Name:	transmembrane protein 74
Database Link:	NP_694560 Entrez Gene 157753 Human Q96NL1
Background:	TMEM74 plays an essential role in autophagy. TMEM74-induced autophagy may involve PI3K signal transduction.
Synonyms:	NET36
Note:	Immunogen Sequence Homology: Dog: 100%; Rat: 100%; Horse: 100%; Human: 100%; Bovine: 100%; Rabbit: 100%; Pig: 93%; Mouse: 93%; Guinea pig: 93%; Zebrafish: 86%
Protein Families:	Transmembrane



[View online »](#)

Product images:



WB Suggested Anti-TMEM74 Antibody Titration:
0.2-1 ug/ml; ELISA Titer: 1: 62500; Positive
Control: Human heart