

Product datasheet for **TA337853**

ARHGEF19 Rabbit Polyclonal Antibody

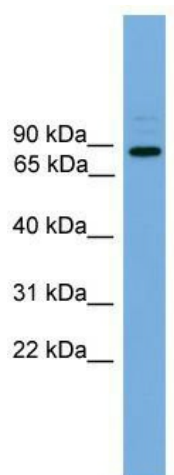
Product data:

Product Type:	Primary Antibodies
Applications:	WB
Recommended Dilution:	WB
Reactivity:	Human
Host:	Rabbit
Isotype:	IgG
Clonality:	Polyclonal
Immunogen:	The immunogen for anti-ARHGEF19 antibody: synthetic peptide directed towards the middle region of human ARHGEF19. Synthetic peptide located within the following region: RFLLSVLYQEYSDVASARELRRQREEEGPGDEAEGAEEGPGPPRANLS
Formulation:	Liquid. Purified antibody supplied in 1x PBS buffer with 0.09% (w/v) sodium azide and 2% sucrose. <i>Note that this product is shipped as lyophilized powder to China customers.</i>
Purification:	Affinity Purified
Conjugation:	Unconjugated
Storage:	Store at -20°C as received.
Stability:	Stable for 12 months from date of receipt.
Predicted Protein Size:	89 kDa
Gene Name:	Rho guanine nucleotide exchange factor 19
Database Link:	NP_694945 Entrez Gene 128272 Human Q8IW93
Background:	Guanine nucleotide exchange factors (GEFs) such as ARHGEF19 accelerate the GTPase activity of Rho GTPases (see RHOA, MIM 165390).
Synonyms:	WGEF
Note:	Immunogen Sequence Homology: Pig: 100%; Rat: 100%; Horse: 100%; Human: 100%; Mouse: 100%; Bovine: 93%



[View online »](#)

Product images:



WB Suggested Anti-ARHGEF19 Antibody Titration:
0.2-1 ug/ml; Positive Control: Hela cell lysate