

Product datasheet for **TA337852**

C13orf31 (LACC1) Rabbit Polyclonal Antibody

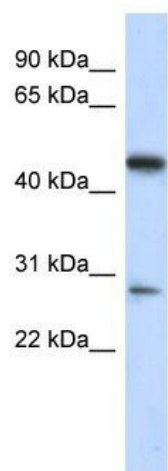
Product data:

Product Type:	Primary Antibodies
Applications:	WB
Recommended Dilution:	WB
Reactivity:	Human
Host:	Rabbit
Isotype:	IgG
Clonality:	Polyclonal
Immunogen:	The immunogen for anti-LACC1 antibody: synthetic peptide directed towards the middle region of human LACC1. Synthetic peptide located within the following region: TIITSSLIPDIFIHGFTTRTGGISYIPTLSSFNLFSSSKRRDPKVVQEN
Formulation:	Liquid. Purified antibody supplied in 1x PBS buffer with 0.09% (w/v) sodium azide and 2% sucrose. <i>Note that this product is shipped as lyophilized powder to China customers.</i>
Purification:	Affinity Purified
Conjugation:	Unconjugated
Storage:	Store at -20°C as received.
Stability:	Stable for 12 months from date of receipt.
Predicted Protein Size:	48 kDa
Gene Name:	laccase domain containing 1
Database Link:	NP_694950 Entrez Gene 144811 Human Q8IV20
Background:	The exact functions of LACC1 remain unknown.
Synonyms:	C13orf31; FAMIN
Note:	Immunogen Sequence Homology: Dog: 100%; Pig: 100%; Rat: 100%; Human: 100%; Mouse: 100%; Bovine: 93%; Rabbit: 93%; Guinea pig: 93%; Horse: 86%



[View online »](#)

Product images:



WB Suggested Anti-LACC1 Antibody Titration: 0.2-1 ug/ml; ELISA Titer: 1: 1562500; Positive Control: Human Lung