

Product datasheet for **TA337851**

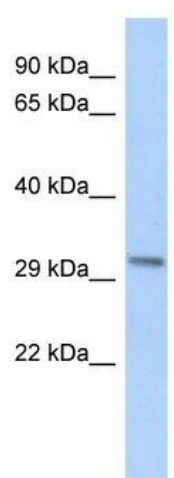
c8orf84 (SBSPON) Rabbit Polyclonal Antibody

Product data:

| | |
|--------------------------------|--|
| Product Type: | Primary Antibodies |
| Applications: | WB |
| Recommended Dilution: | WB |
| Reactivity: | Human |
| Host: | Rabbit |
| Isotype: | IgG |
| Clonality: | Polyclonal |
| Immunogen: | The immunogen for anti-SBSPON antibody: synthetic peptide directed towards the middle region of human SBSPON. Synthetic peptide located within the following region: LRCSGDGLDSDGNQTLHWQAIGNPRCQGTWKKVRRVDQCSCPAVHSFIFI |
| Formulation: | Liquid. Purified antibody supplied in 1x PBS buffer with 0.09% (w/v) sodium azide and 2% sucrose. <i>Note that this product is shipped as lyophilized powder to China customers.</i> |
| Purification: | Affinity Purified |
| Conjugation: | Unconjugated |
| Storage: | Store at -20°C as received. |
| Stability: | Stable for 12 months from date of receipt. |
| Predicted Protein Size: | 29 kDa |
| Gene Name: | somatomedin B and thrombospondin type 1 domain containing |
| Database Link: | NP_694957 Entrez Gene 157869 Human Q8IVN8 |
| Background: | SBSPON belongs to the thrombospondin family. It contains 1 SMB (somatomedin-B) domain and 1 TSP type-1 domain. The exact function of SBSPON remains unknown. |
| Synonyms: | C8orf84; RPESP |
| Note: | Immunogen Sequence Homology: Dog: 100%; Pig: 100%; Rat: 100%; Horse: 100%; Human: 100%; Mouse: 100%; Bovine: 100%; Rabbit: 100%; Guinea pig: 93% |



[View online »](#)

Product images:

WB Suggested Anti-SBSPON Antibody Titration:
0.2-1 ug/ml; ELISA Titer: 1: 12500; Positive
Control: Human heart