

Product datasheet for **TA337850**

c8orf84 (SBSPON) Rabbit Polyclonal Antibody

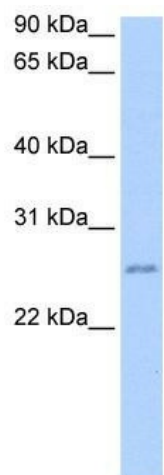
Product data:

Product Type:	Primary Antibodies
Applications:	WB
Recommended Dilution:	WB
Reactivity:	Human
Host:	Rabbit
Isotype:	IgG
Clonality:	Polyclonal
Immunogen:	The immunogen for anti-SBSPON antibody: synthetic peptide directed towards the C terminal of human SBSPON. Synthetic peptide located within the following region: WMQYLREGYTVDCQPPAMNSVSLRCSGDGLSDGNQTLHWQAIGNPRC
Formulation:	Liquid. Purified antibody supplied in 1x PBS buffer with 0.09% (w/v) sodium azide and 2% sucrose. <i>Note that this product is shipped as lyophilized powder to China customers.</i>
Purification:	Affinity Purified
Conjugation:	Unconjugated
Storage:	Store at -20°C as received.
Stability:	Stable for 12 months from date of receipt.
Predicted Protein Size:	29 kDa
Gene Name:	somatomedin B and thrombospondin type 1 domain containing
Database Link:	NP_694957 Entrez Gene 157869 Human Q8IVN8
Background:	SBSPON belongs to the thrombospondin family. It contains 1 SMB (somatomedin-B) domain and 1 TSP type-1 domain. The exact function of SBSPON remains unknown.
Synonyms:	C8orf84; RPESP
Note:	Immunogen Sequence Homology: Dog: 100%; Pig: 100%; Rat: 100%; Horse: 100%; Human: 100%; Mouse: 100%; Bovine: 100%; Rabbit: 100%; Guinea pig: 92%



[View online »](#)

Product images:



WB Suggested Anti-SBSPON Antibody Titration:
0.2-1 ug/ml; Positive Control: Jurkat cell lysate