

## Product datasheet for **TA337843**

### ENPP6 Rabbit Polyclonal Antibody

#### Product data:

Product Type:	Primary Antibodies
Applications:	WB
Recommended Dilution:	WB
Reactivity:	Human
Host:	Rabbit
Isotype:	IgG
Clonality:	Polyclonal
Immunogen:	The immunogen for anti-ENPP6 antibody: synthetic peptide directed towards the middle region of human ENPP6. Synthetic peptide located within the following region: ELMDMRGIFLAFGPDFKSNFRAAPIRSVDVYNVMCNVVGITPLPNNGSWS
Formulation:	Liquid. Purified antibody supplied in 1x PBS buffer with 0.09% (w/v) sodium azide and 2% sucrose. <i>Note that this product is shipped as lyophilized powder to China customers.</i>
Purification:	Affinity Purified
Conjugation:	Unconjugated
Storage:	Store at -20°C as received.
Stability:	Stable for 12 months from date of receipt.
Predicted Protein Size:	50 kDa
Gene Name:	ectonucleotide pyrophosphatase/phosphodiesterase 6
Database Link:	<a href="#">NP_699174</a> <a href="#">Entrez Gene 133121 Human</a> <a href="#">Q6UWR7</a>



[View online »](#)

**Background:** ENPP6 is a choline-specific glycerophosphodiester phosphodiesterase. ENPP6 hydrolyzes the classical substrate for phospholipase C, p-nitrophenyl phosphorylcholine, while it does not hydrolyze the classical nucleotide phosphodiesterase substrate, p-nitrophenyl thymidine 5'-monophosphate. ENPP6 hydrolyzes lysophosphatidylcholine (LPC) to form monoacylglycerol and phosphorylcholine but not lysophosphatidic acid, showing it has a lysophospholipase C activity. ENPP6 has a preference for LPC with short (12:0 and 14:0) or polyunsaturated (18:2 and 20:4) fatty acids. Also hydrolyzes glycerophosphorylcholine and sphingosylphosphorylcholine efficiently.

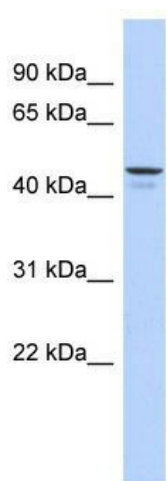
**Synonyms:** NPP6

**Note:** Immunogen Sequence Homology: Pig: 100%; Rat: 100%; Horse: 100%; Human: 100%; Mouse: 100%; Rabbit: 100%; Dog: 93%; Guinea pig: 93%; Bovine: 92%; Zebrafish: 85%

**Protein Families:** Secreted Protein

**Protein Pathways:** Ether lipid metabolism

### Product images:



WB Suggested Anti-ENPP6 Antibody Titration: 0.2-1 ug/ml; ELISA Titer: 1: 1562500; Positive Control: 721\_B cell lysate